



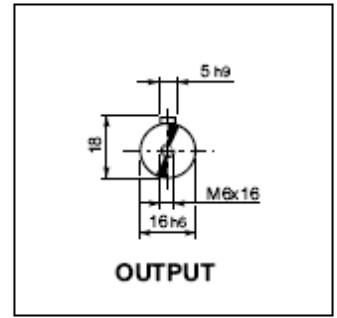
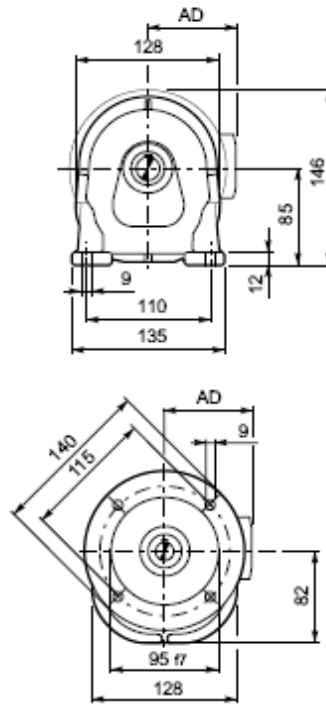
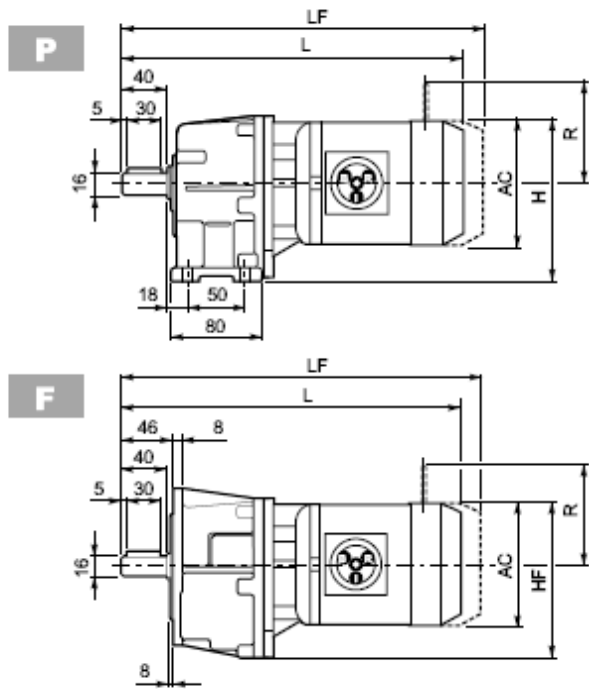
C 05...M

28 - DIMENSIONI

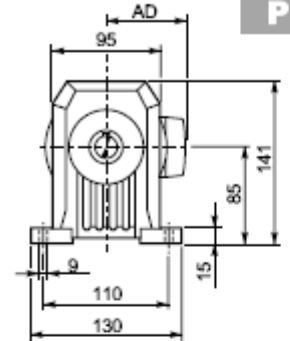
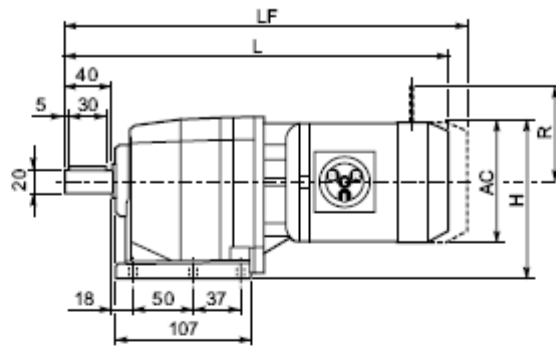
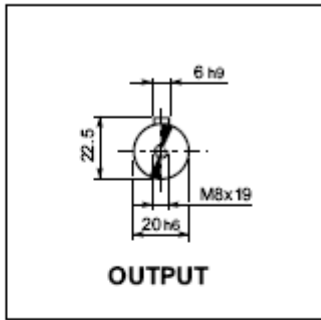
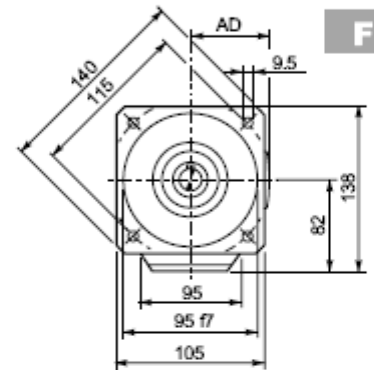
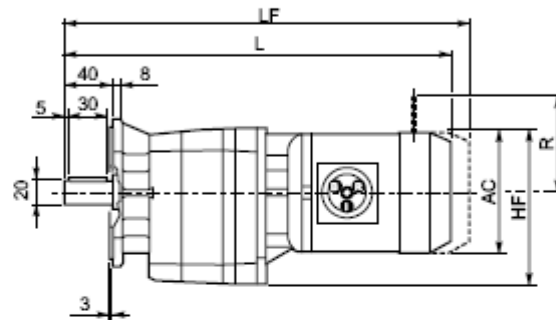
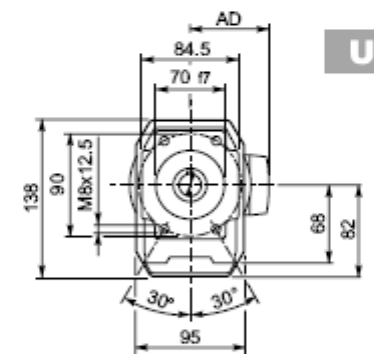
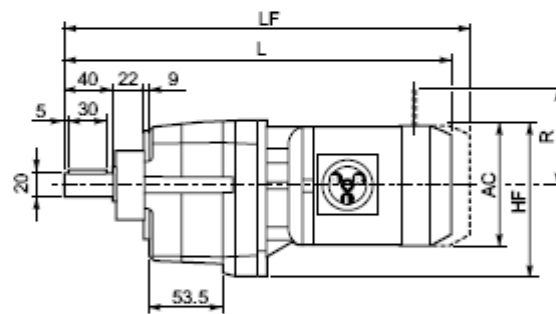
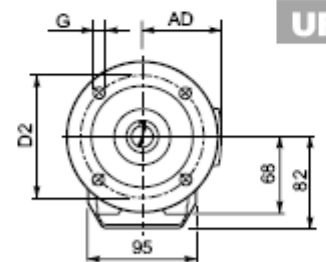
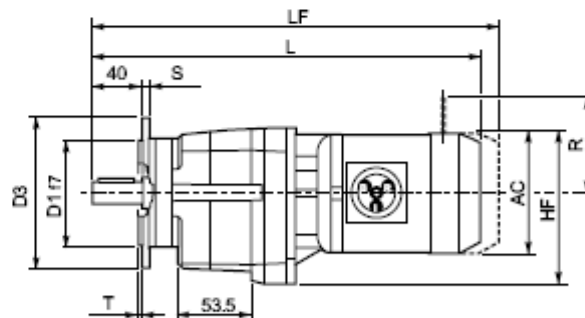
28 - DIMENSIONS

28 - ABMESSUNGEN

28 - DIMENSIONS



C 05															
				AC	H	HF	L	AD		M...FD M...FA		M...FD		M...FA	
										LF		R	AD	R	AD
C 05 2	S0	M0		110	140	137	286.5	91	7	—	—	—	—	—	—
C 05 2	S05	M05		121	145.5	142.5	332	95	8	398	10	96	119	116	95
C 05 2	S1	M1S		138	154	151	337	108	9	400	12	103	132	124	108
C 05 2	S1	M1L		138	154	151	361	108	11	422	13	103	132	124	108


P

F

U

UF

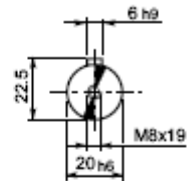
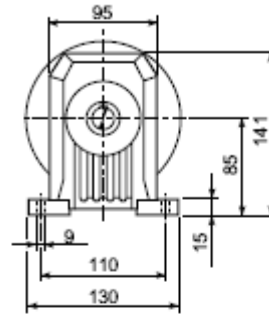
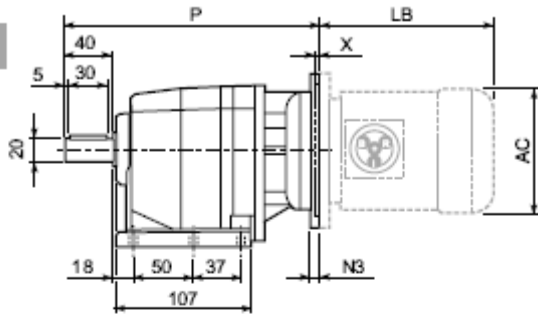
C 11 2 U						
	D1	D2	D3	G	T	S
FA	80	100	120	7	3	8
FB	95	115	140	9	3	10
FC	110	130	160	9	3	10

C 11															
Image	Image	Image	AC	H	HF	L	AD	Image	M...FD M...FA		M...FD		M...FA		
									LF	Image	R	AD	R	AD	
C 11 2	S05	M05	121	145.5	142.5	370.5	95	9	436.5	Image	10	96	119	116	95
C 11 2	S1	M1S	138	154	151	375.5	108	10	438.5	Image	12	103	132	124	108
C 11 2	S1	M1L	138	154	151	399.5	108	11	460.5	Image	13	103	132	124	108
C 11 2	S2	M2S	156	163	160	422.5	119	15	498.5	Image	18	129	143	134	119
C 11 2	S3	M3S	195	182.5	179.5	471.5	142	20	567.5	Image	25	160	155	160	142
C 11 2	S3	M3L	195	182.5	179.5	503.5	142	22	594.5	Image	27	160	155	160	142



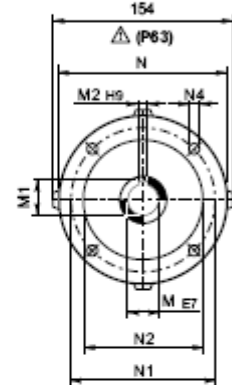
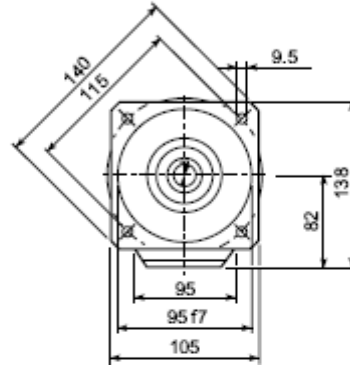
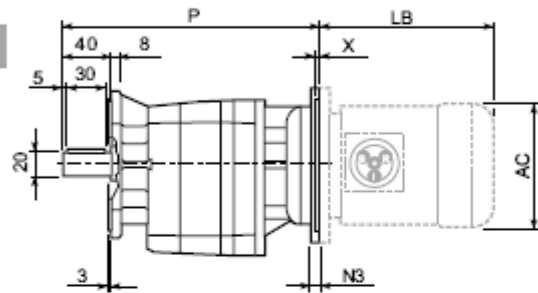
C 11...P(IEC)

P



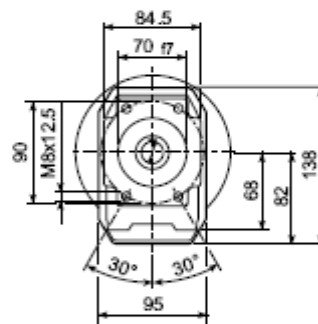
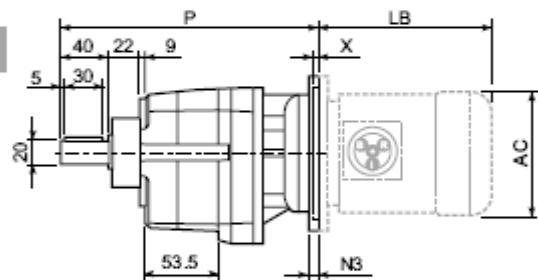
OUTPUT

F

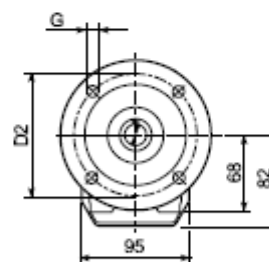
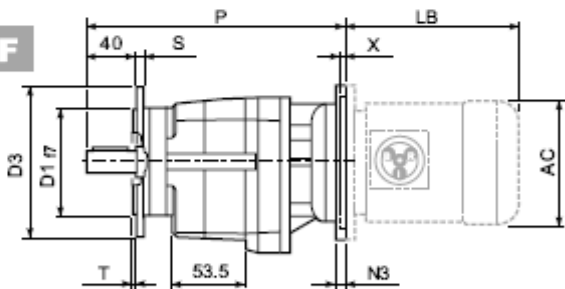


INPUT

U



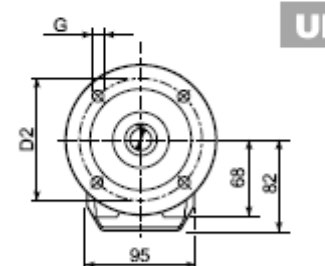
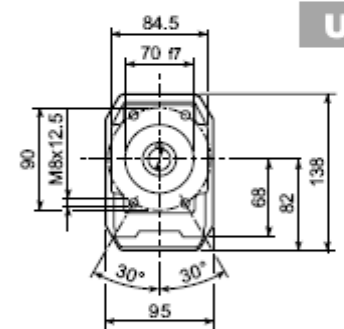
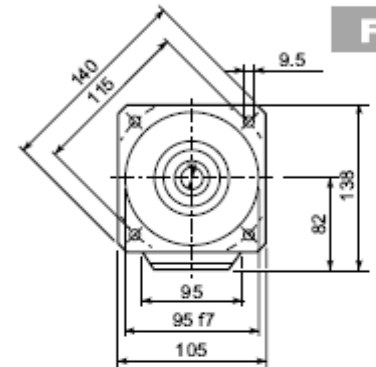
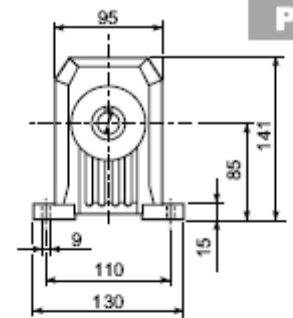
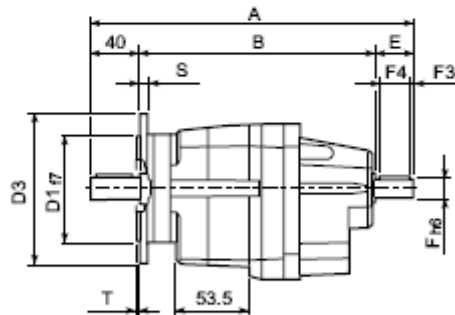
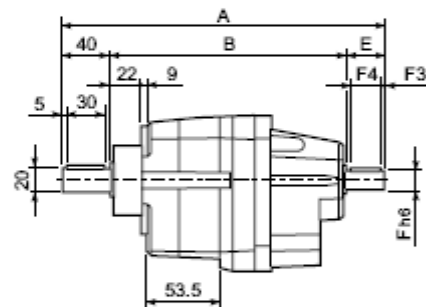
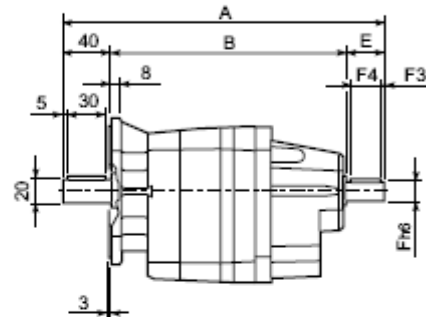
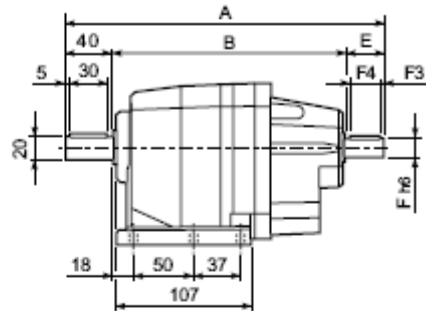
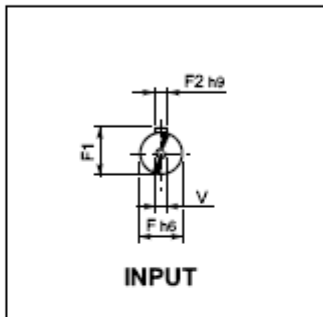
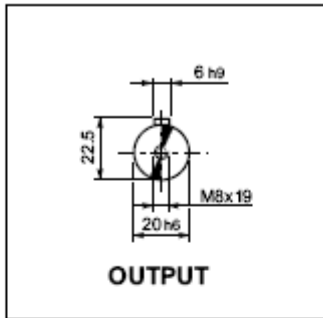
UF



C 11 2 U

	D1	D2	D3	G	T	S
FA	80	100	120	7	3	8
FB	95	115	140	9	3	10
FC	110	130	160	9	3	10

C 11													BN...		BN...FD BN...FA		
		M	M1	M2	N	N1	N2	N3	N4	X	P			LB	AC	LB	AC
C 11 2	P63	11	12.8	4	140	115	95	—	M8x19	4	244.5	6	BN 63	184	121	249	121
C 11 2	P71	14	16.3	5	160	130	110	—	M8x16	4,5	244.5	6	BN 71	219	138	280	138
C 11 2	P80	19	21.8	6	200	165	130	—	M10x12	4	264	7	BN 80	234	156	306	156
C 11 2	P90	24	27.3	8	200	165	130	—	M10x12	4	264	7	BN 90	276	176	359	176
C 11 2	P100	28	31.3	8	250	215	180	—	M12x16	4,5	274	11	BN 100	307	195	398	195
C 11 2	P112	28	31.3	8	250	215	180	—	M12x16	4,5	274	11	BN 112	325	219	424	219

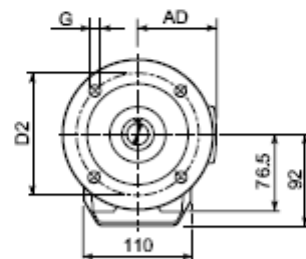
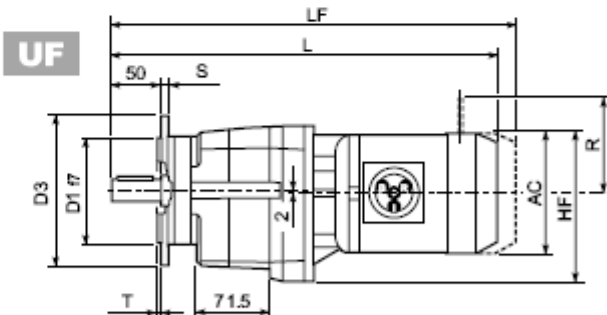
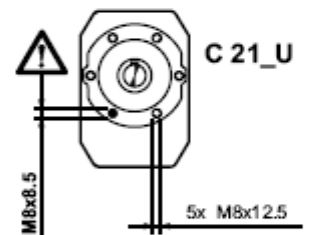
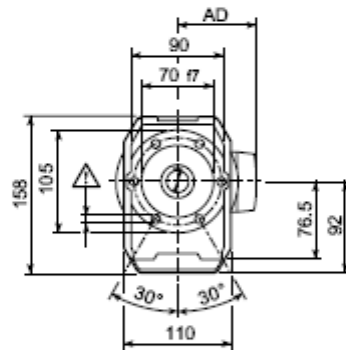
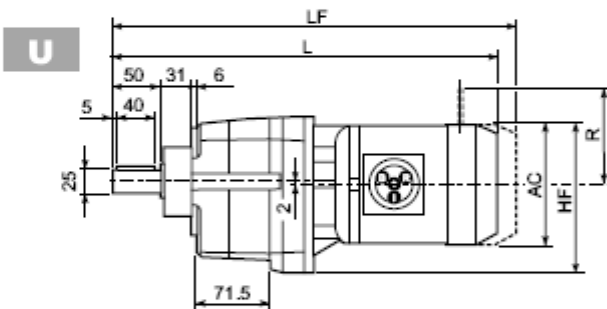
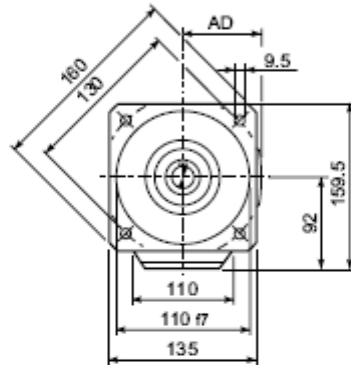
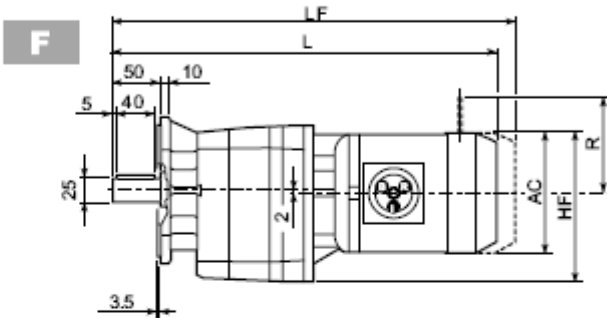
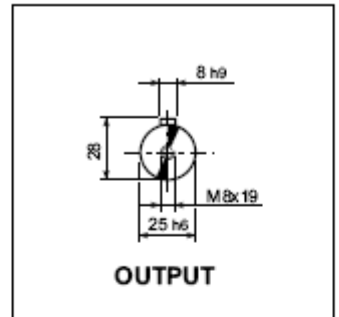
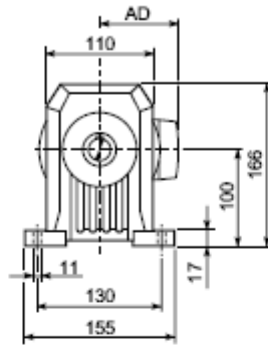
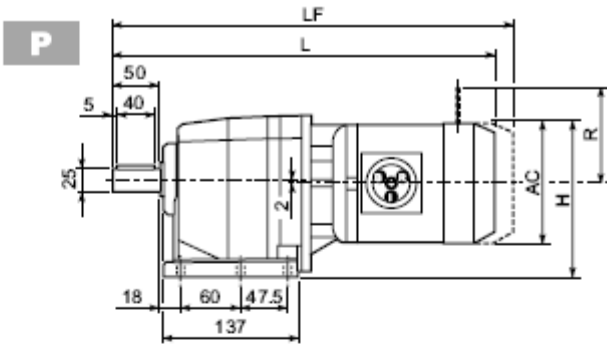


C 112 U						
	D1	D2	D3	G	T	S
FA	80	100	120	7	3	8
FB	95	115	140	9	3	10
FC	110	130	160	9	3	10

C 11											
		A	B	E	F	F1	F2	F3	F4	V	
		251.5	171.5	40	16	18	5	2.5	35	M6x16	7.8



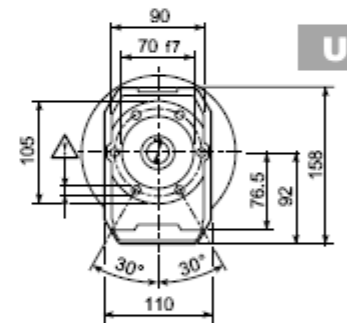
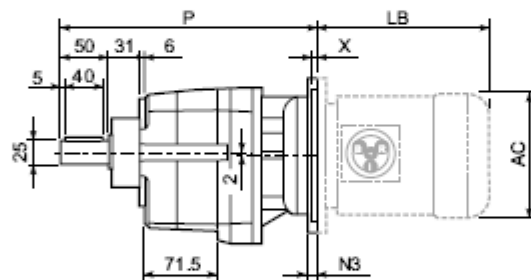
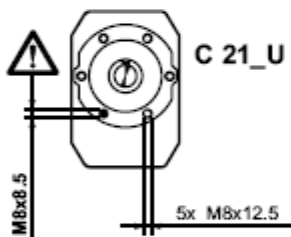
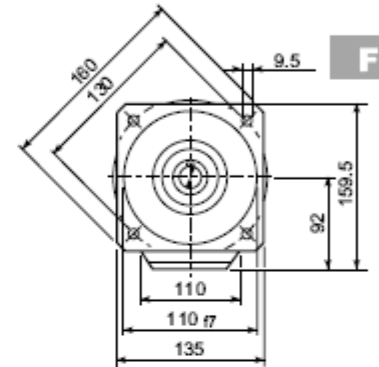
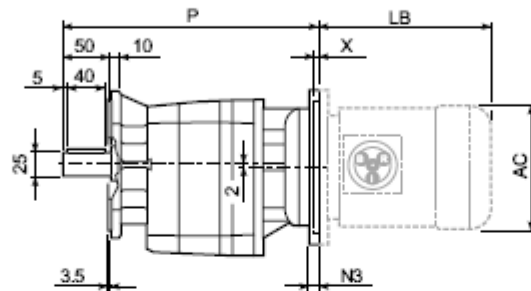
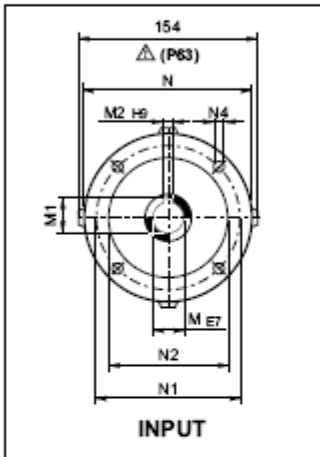
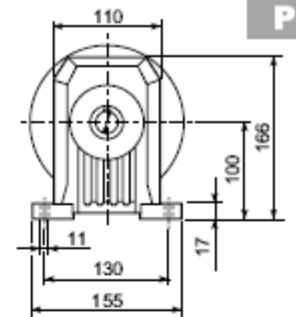
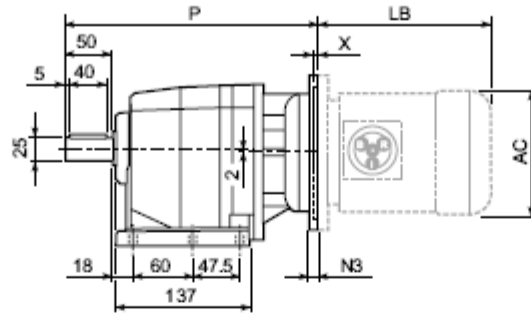
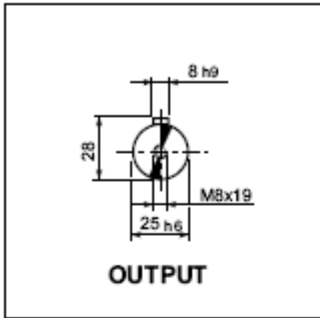
C 21...M



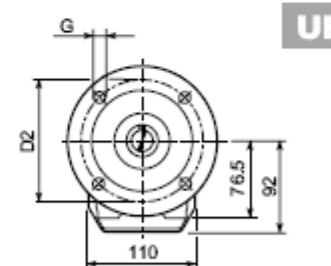
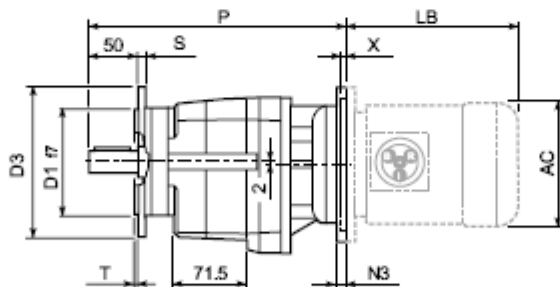
C 21 U						
	D1	D2	D3	G	T	S
FA	95	115	140	9	3	10
FB	110	130	160	9	3	10
FC	130	165	200	11	3.5	11

C 21														
	AC	H	HF	L	AD		M...FD		M...FD		M...FA			
							M...FA		R	AD	R	AD		
C 21 2 S1 M1S	138	169	163	404	108	10	467	13	103	132	124	108		
C 21 2 S1 M1L	138	169	163	428	108	11	489	14	103	132	124	108		
C 21 2 S2 M2S	156	178	172	451	119	16	527	19	129	143	134	119		
C 21 2 S3 M3S	195	197.5	191.5	500	142	21	596	26	160	155	160	142		
C 21 2 S3 M3L	195	197.5	191.5	532	142	27	623	32	160	155	160	142		
C 21 3 S05 M05	121	160.5	154.5	454.5	95	11	520.5	12	96	119	116	95		
C 21 3 S1 M1S	138	169	163	459.5	108	12	522.5	14	103	132	124	108		
C 21 3 S1 M1L	138	169	163	483.5	108	13	544.5	15	103	132	124	108		

C 21...P(IEC)



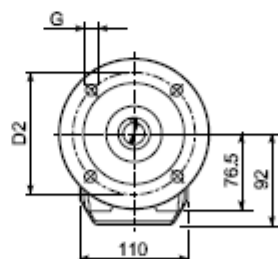
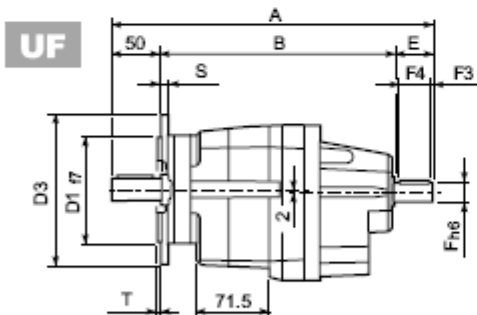
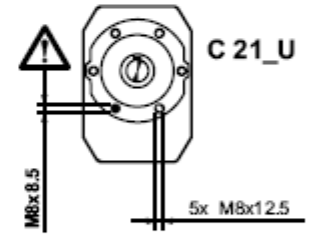
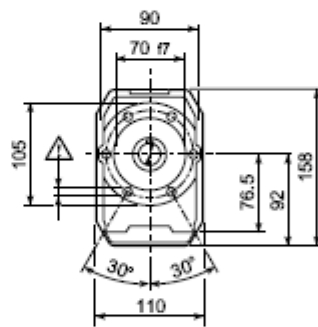
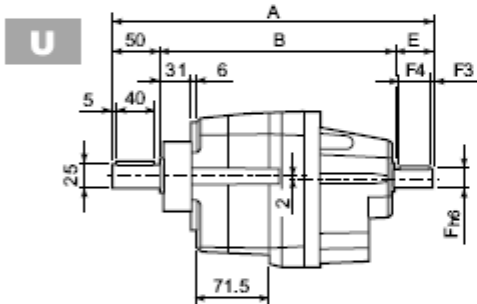
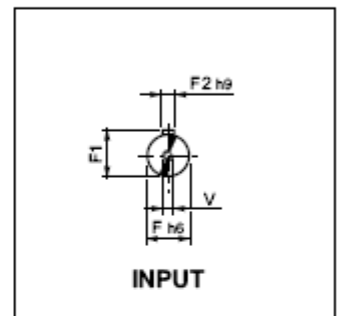
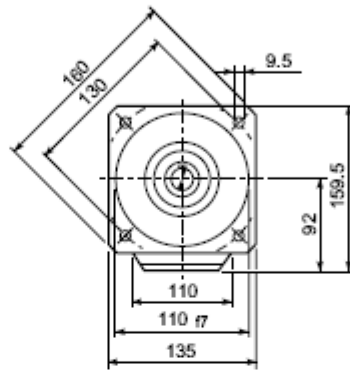
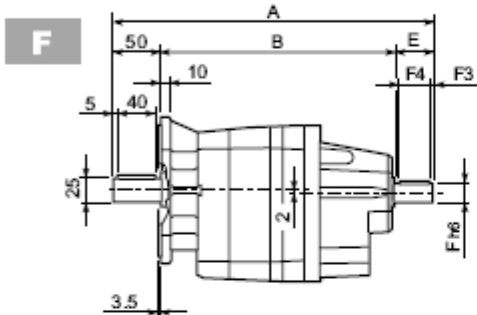
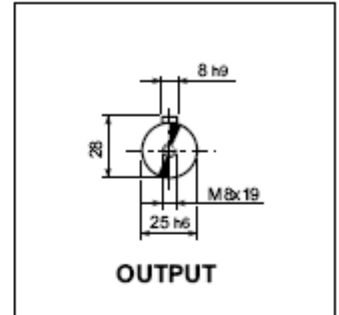
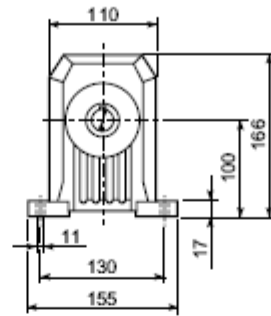
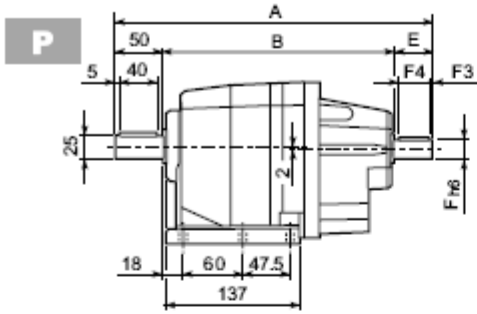
C 21 U						
	D1	D2	D3	G	T	S
FA	95	115	140	9	3	10
FB	110	130	160	9	3	10
FC	130	165	200	11	3.5	11



C 21														BN...		BN...FD BN...FA		
		M	M1	M2	N	N1	N2	N3	N4	X	P			LB	AC	LB	AC	
C 21 2	P63	11	12.8	4	140	115	95	—	M8x19	4	273	7		BN 63	184	121	249	121
C 21 2	P71	14	16.3	5	160	130	110	—	M8x16	4.5	273	7		BN 71	219	138	280	138
C 21 2	P80	19	21.8	6	200	165	130	—	M10x12	4	292.5	8		BN 80	234	156	306	156
C 21 2	P90	24	27.3	8	200	165	130	—	M10x12	4	292.5	8		BN 90	276	176	359	176
C 21 2	P100	28	31.3	8	250	215	180	—	M12x16	4.5	302.5	12		BN 100	307	195	398	195
C 21 2	P112	28	31.3	8	250	215	180	—	M12x16	4.5	302.5	12		BN 112	325	219	424	219
C 21 3	P63	11	12.8	4	140	115	95	—	M8x19	4	328.5	8		BN 63	184	121	249	121
C 21 3	P71	14	16.3	5	160	130	110	—	M8x16	4.5	328.5	8		BN 71	219	138	280	138
C 21 3	P80	19	21.8	6	200	165	130	—	M10x12	4	348	9		BN 80	234	156	306	156
C 21 3	P90	24	27.3	8	200	165	130	—	M10x12	4	348	9		BN 90	276	176	359	176
C 21 3	P100	28	31.3	8	250	215	180	—	M12x16	4.5	358	13		BN 100	307	195	398	195
C 21 3	P112	28	31.3	8	250	215	180	—	M12x16	4.5	358	13		BN 112	325	219	424	219



C 21...HS



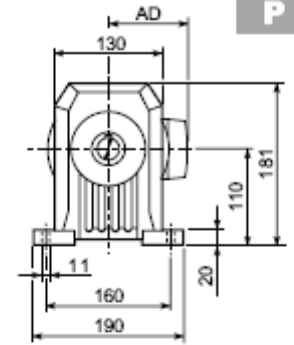
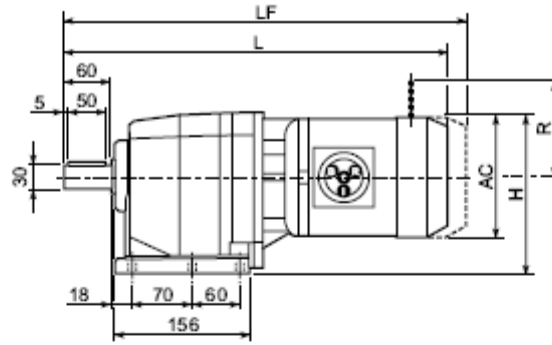
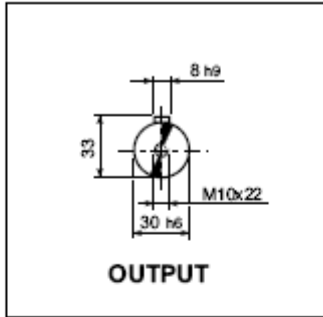
C 21_U

	D1	D2	D3	G	T	S
FA	95	115	140	9	3	10
FB	110	130	160	9	3	10
FC	130	165	200	11	3.5	11

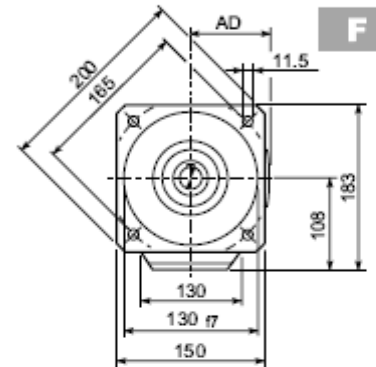
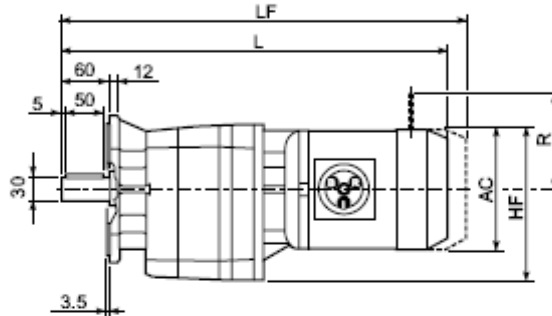
C 21

		A	B	E	F	F1	F2	F3	F4	V	Kg
C 21 2	HS	323	233	40	19	21.5	6	2.5	35	M6x16	7.2
C 21 3		335.5	245.5	40	16	18	6	2.5	36	M6x16	7.5

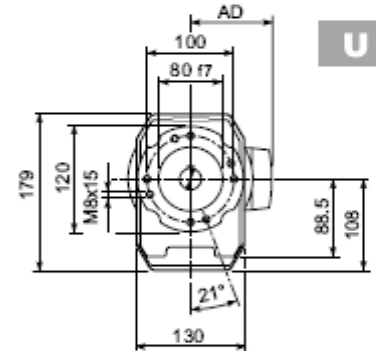
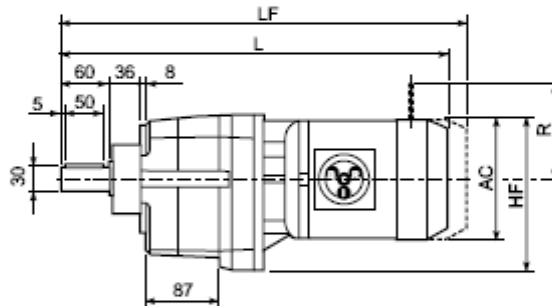
C 31...M



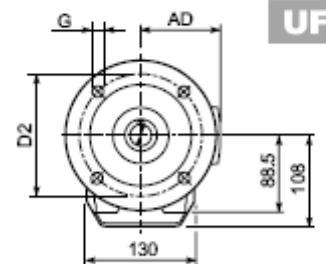
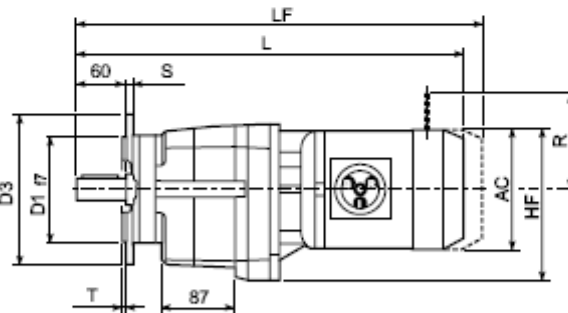
P



F



U



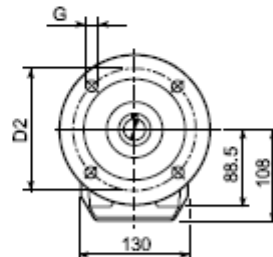
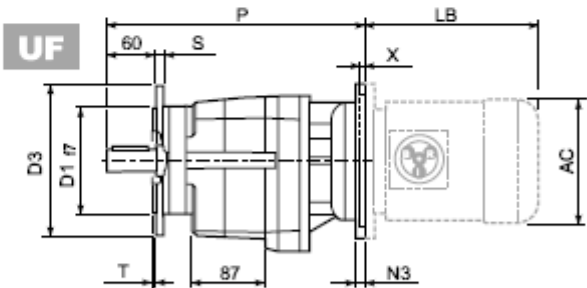
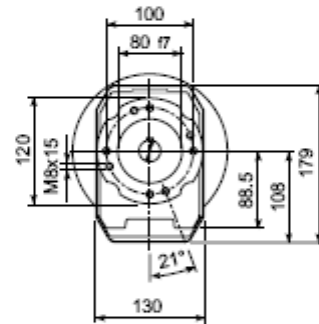
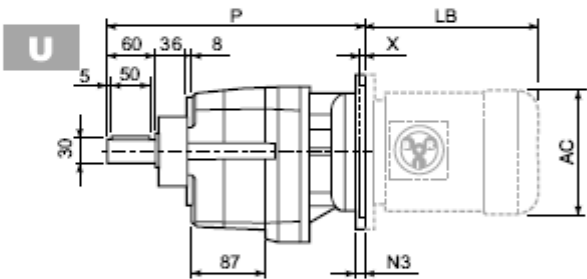
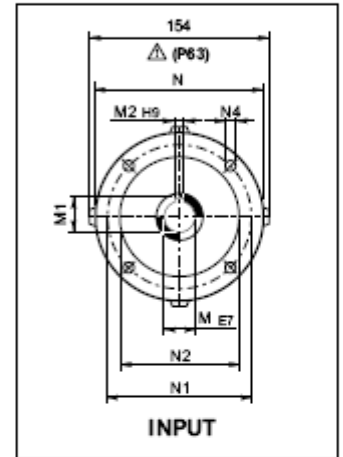
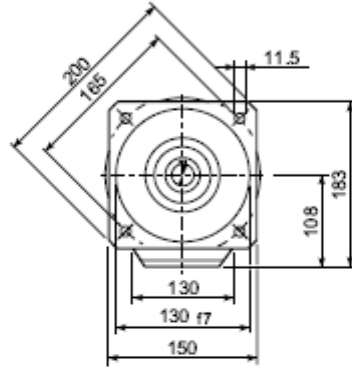
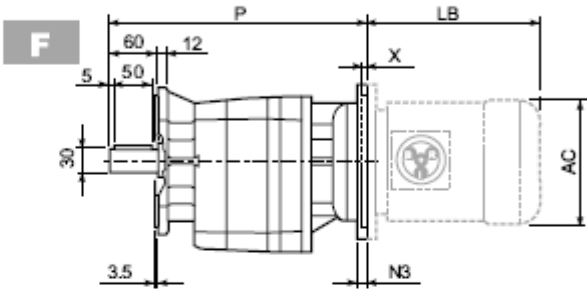
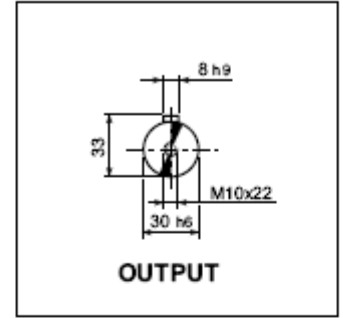
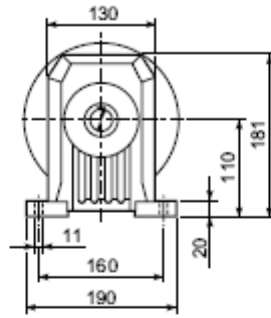
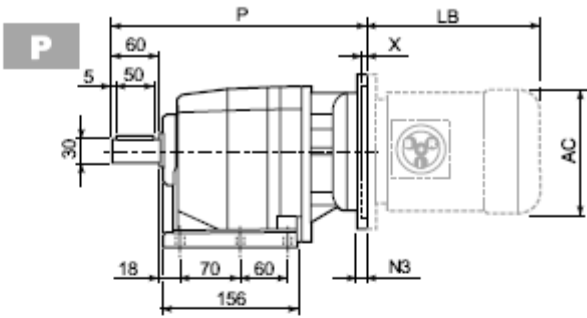
UF

C 31_U						
	D1	D2	D3	G	T	S
FA	110	130	160	9	3	10
FB	130	165	200	11	3.5	11
FC	180	215	250	14	4	13

C 31														
Image	S	M	AC	H	HF	L	AD	Kg	M...FD		M...FD		M...FA	
									LF	Kg	R	AD	R	AD
	S1	M1S	138	179	177	438.5	108	13	501.5	15	103	132	124	108
	S1	M1L	138	179	177	462.5	108	14	523.5	16	103	132	124	108
	S2	M2S	156	188	186	485.5	119	18	561.5	21	129	143	134	119
	S3	M3S	195	207.5	205.5	534.5	142	23	630.5	28	160	155	160	142
	S3	M3L	195	207.5	205.5	566.5	142	32	657.5	37	160	155	160	142
	S05	M05	121	170.5	168.5	491	95	13	557	15	96	119	116	95
	S1	M1S	138	179	177	496	108	14	559	16	103	132	124	108
	S1	M1L	138	179	177	520	108	15	581	17	103	132	124	108
	S2	M2S	156	188	186	543	119	18	619	21	129	143	134	119



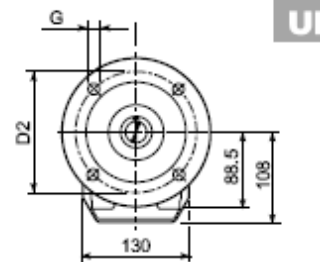
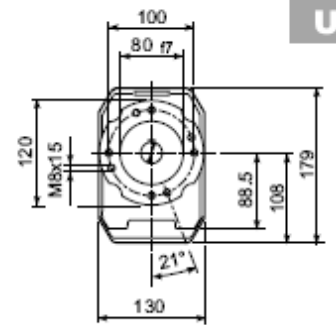
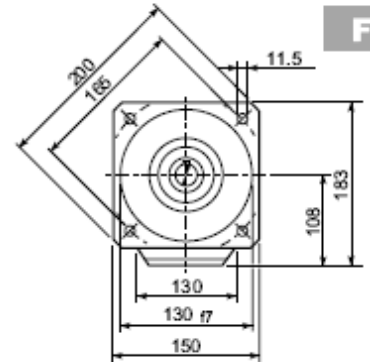
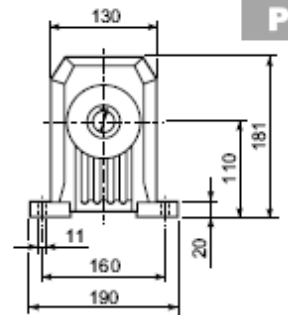
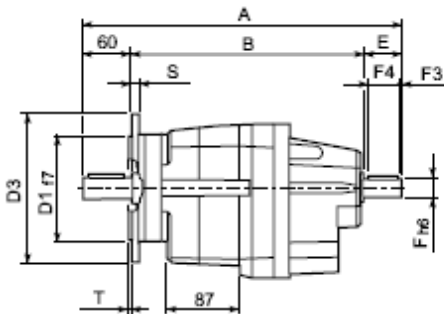
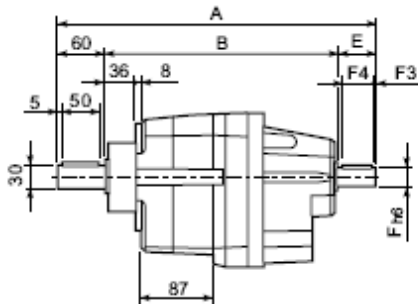
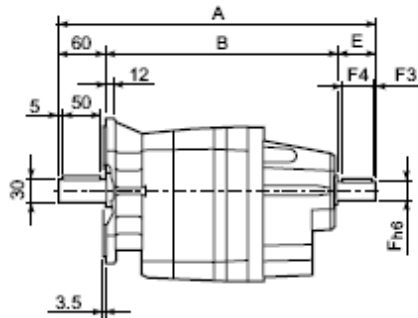
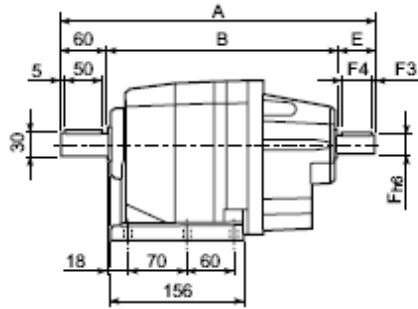
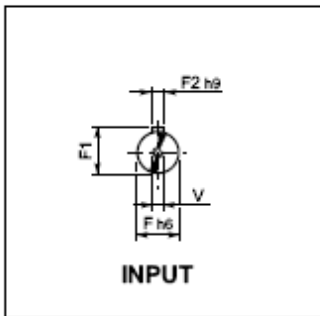
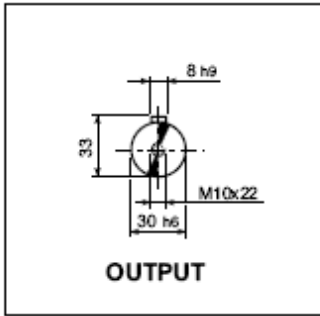
C 31...P(IEC)



C 31_U						
	D1	D2	D3	G	T	S
FA	110	130	160	9	3	10
FB	130	165	200	11	3.5	11
FC	180	215	250	14	4	13

C 31													BN...		BN...FD BN...FA			
		M	M1	M2	N	N1	N2	N3	N4	X	P			LB	AC	LB	AC	
C 31 2	P63	11	12.8	4	140	115	95	—	M8x19	4	307.5	9		BN 63	184	121	249	121
C 31 2	P71	14	16.3	5	160	130	110	—	M8x16	4.5	307.5	9		BN 71	219	138	280	138
C 31 2	P80	19	21.8	6	200	165	130	—	M10x12	4	327	10		BN 80	234	156	306	156
C 31 2	P90	24	27.3	8	200	165	130	—	M10x12	4	327	10		BN 90	276	176	359	176
C 31 2	P100	28	31.3	8	250	215	180	—	M12x16	4.5	337	14		BN 100	307	195	398	195
C 31 2	P112	28	31.3	8	250	215	180	—	M12x16	4.5	337	14		BN 112	325	219	424	219
C 31 3	P63	11	12.8	4	140	115	95	—	M8x19	4	365	10		BN 63	184	121	249	121
C 31 3	P71	14	16.3	5	160	130	110	—	M8x16	4.5	365	10		BN 71	219	138	280	138
C 31 3	P80	19	21.8	6	200	165	130	—	M10x12	4	384.5	11		BN 80	234	156	306	156
C 31 3	P90	24	27.3	8	200	165	130	—	M10x12	4	384.5	11		BN 90	276	176	359	176
C 31 3	P100	28	31.3	8	250	215	180	—	M12x16	4.5	394.5	15		BN 100	307	195	398	195
C 31 3	P112	28	31.3	8	250	215	180	—	M12x16	4.5	394.5	15		BN 112	325	219	424	219

C 31...HS

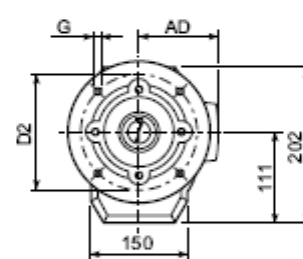
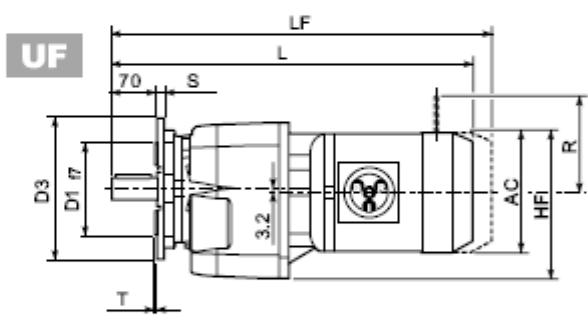
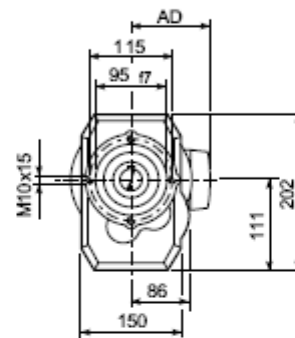
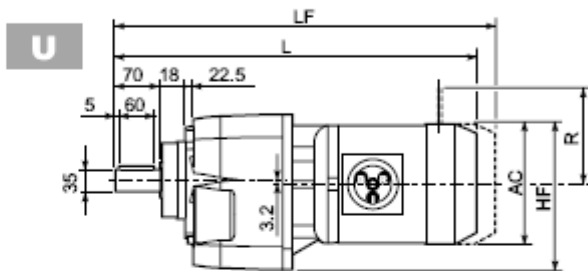
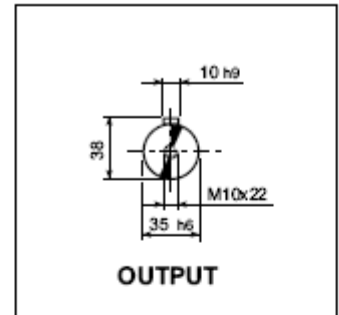
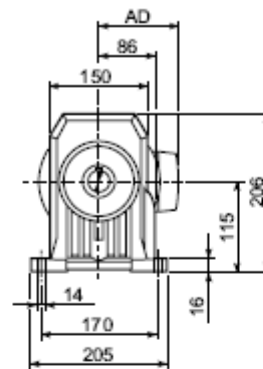
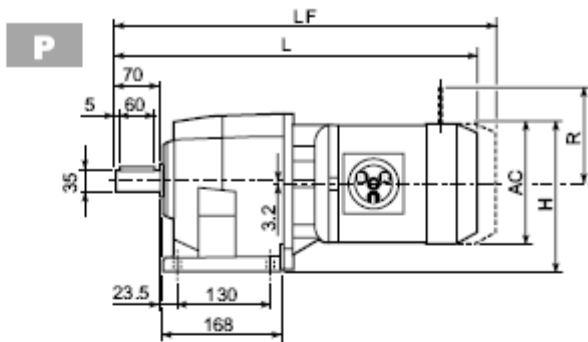


C 31_U						
	D1	D2	D3	G	T	S
FA	110	130	160	9	3	10
FB	130	165	200	11	3.5	11
FC	180	215	250	14	4	13

C 31											
		A	B	E	F	F1	F2	F3	F4	V	
	HS	357.5	257.5	40	19	21.5	6	2.5	35	M6x16	11.1
C 31 3		372	272	40	16	18	5	2.5	36	M6x16	10.6



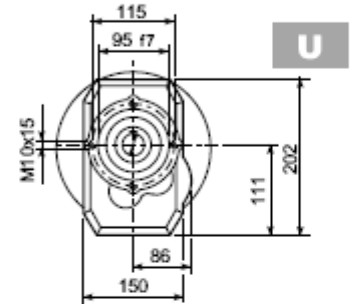
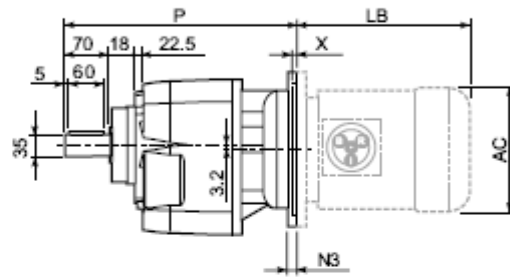
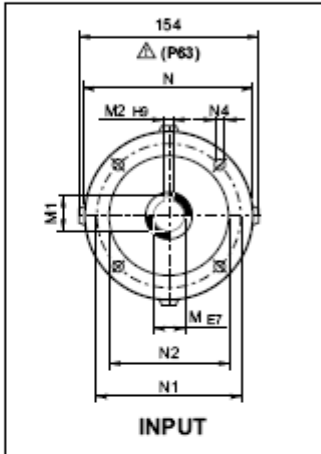
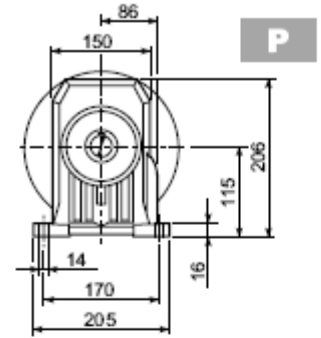
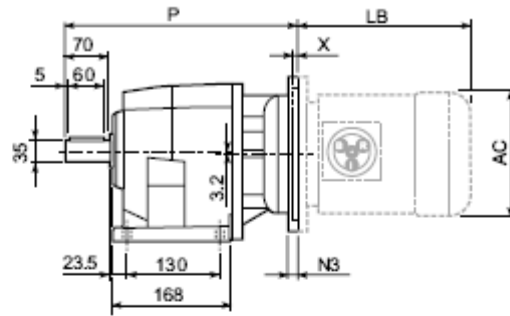
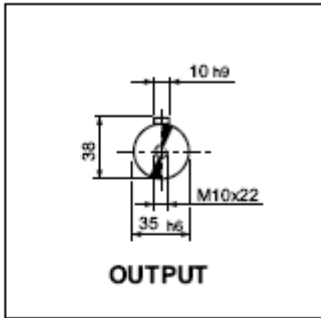
C 35...M



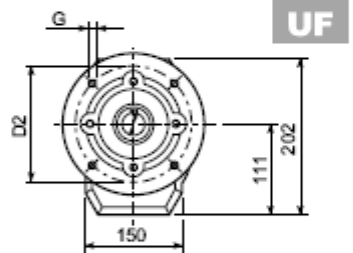
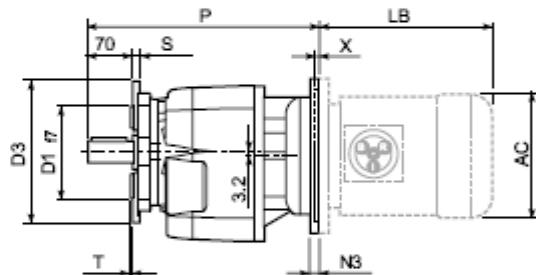
C 35 U						
	D1	D2	D3	G	T	S
FA	130	165	200	11	3.5	11
FB	180	215	250	14	4	14

C 35														
			AC	H	HF	L	AD		M...FD M...FA		M...FD		M...FA	
									LF		R	AD	R	AD
C 35 2/3	S1	M1S	138	184	177	457	108	20	520	20	103	132	124	108
C 35 2/3	S1	M1L	138	184	177	481	108	20	542	21	103	132	124	108
C 35 2/3	S2	M2S	156	193	186	504	119	23	580	27	129	143	134	119
C 35 2/3	S3	M3S	195	212.5	205.5	553	142	28	649	33	160	155	160	142
C 35 2/3	S3	M3L	195	212.5	205.5	585	142	37	676	42	160	155	160	142
C 35 4	S05	M05	121	175.5	168.5	509.5	95	19	575.5	20	96	119	116	95
C 35 4	S1	M1S	138	184	177	514.5	108	21	577.5	21	103	132	124	108
C 35 4	S1	M1L	138	184	177	538.5	108	21	599.5	22	103	132	124	108
C 35 4	S2	M2S	156	193	186	561.5	119	24	637.5	28	129	143	134	119
C 35 4	S3	M3S	195	212.5	205.5	610.5	142	29	706.5	34	160	155	160	142
C 35 4	S3	M3L	195	212.5	205.5	642.5	142	38	733.5	43	160	155	160	142

C 35...P(IEC)



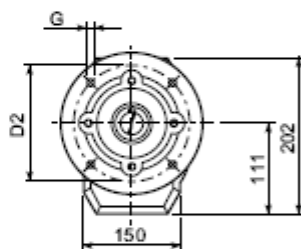
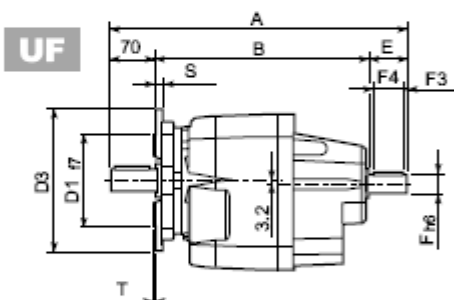
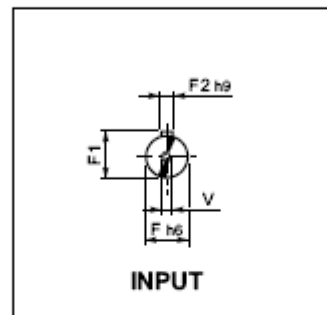
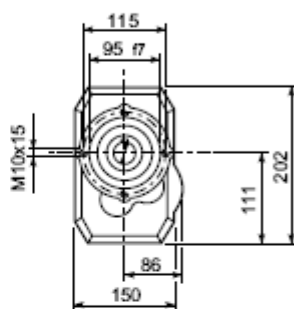
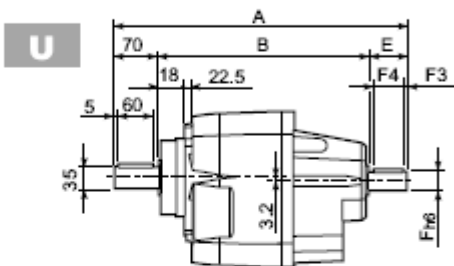
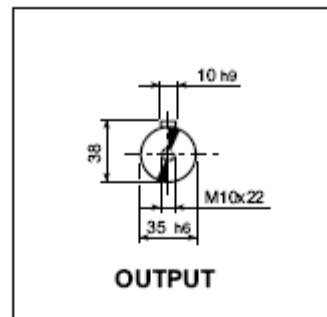
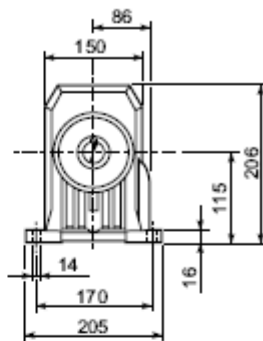
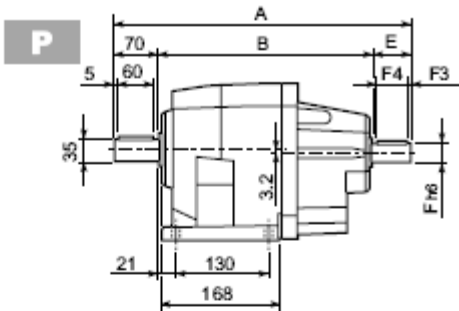
C 35 U						
	D1	D2	D3	G	T	S
FA	130	165	200	11	3.5	11
FB	180	215	250	14	4	14



C 35													BN...		BN...FD BN...FA		
		M	M1	M2	N	N1	N2	N3	N4	X	P			LB	AC	LB	AC
	C 35 2/3 P63	11	12.8	4	140	115	95	—	M8x19	4	326	17	BN 63	184	121	249	121
	C 35 2/3 P71	14	16.3	5	160	130	110	—	M8x16	4.5	326	17	BN 71	219	138	280	138
	C 35 2/3 P80	19	21.8	6	200	165	130	—	M10x12	4	345.5	18	BN 80	234	156	306	156
	C 35 2/3 P90	24	27.3	8	200	165	130	—	M10x12	4	345.5	18	BN 90	276	176	359	176
	C 35 2/3 P100	28	31.3	8	250	215	180	—	M12x16	4.5	355.5	22	BN 100	307	195	398	195
	C 35 2/3 P112	28	31.3	8	250	215	180	—	M12x16	4.5	355.5	22	BN 112	325	219	424	219
	C 35 4 P63	11	12.8	4	140	115	95	—	M8x19	4	383.5	20	BN 63	184	121	249	121
	C 35 4 P71	14	16.3	5	160	130	110	—	M8x16	4.5	383.5	20	BN 71	219	138	280	138
	C 35 4 P80	19	21.8	6	200	165	130	—	M10x12	4	403	21	BN 80	234	156	306	156
	C 35 4 P90	24	27.3	8	200	165	130	—	M10x12	4	403	21	BN 90	276	176	359	176
	C 35 4 P100	28	31.3	8	250	215	180	—	M12x16	4.5	413	25	BN 100	307	195	398	195
	C 35 4 P112	28	31.3	8	250	215	180	—	M12x16	4.5	413	25	BN 112	325	219	424	219



C 35...HS

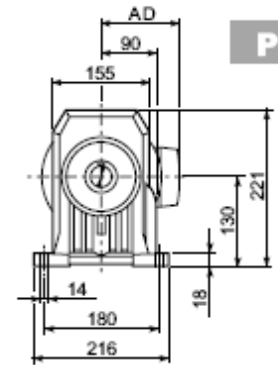
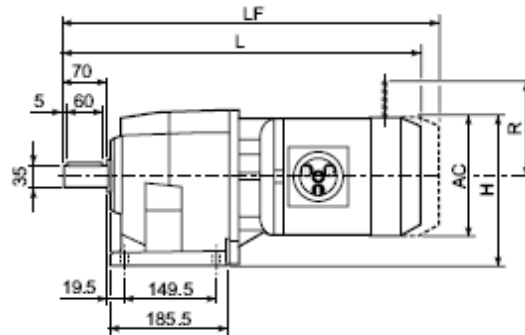
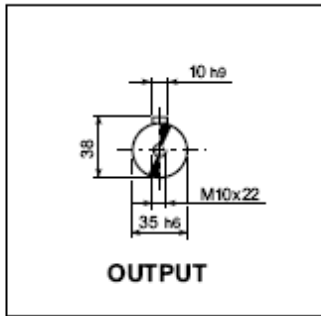


C 35 U						
	D1	D2	D3	G	T	S
FA	130	165	200	11	3.5	11
FB	180	215	250	14	4	14

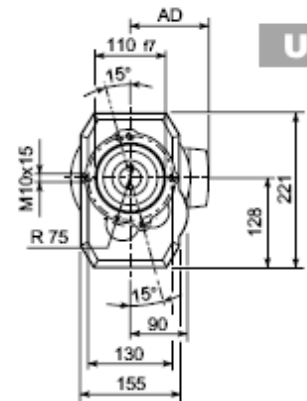
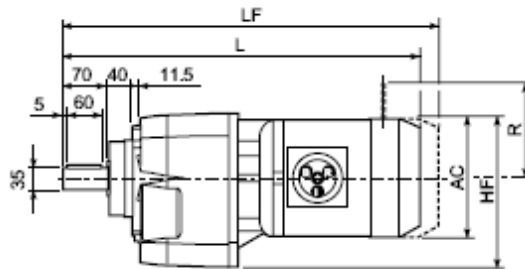
C 35

		A	B	E	F	F1	F2	F3	F4	V	kg
C 35 2	HS	415.5	295.5	50	24	27	8	2.5	45	M8x19	25.5
C 35 3		415.5	295.5	50	24	27	8	2.5	45	M8x19	25.5
C 35 4		390.5	280.5	40	16	18	5	2.5	36	M6x16	26.5

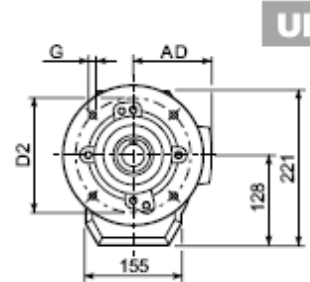
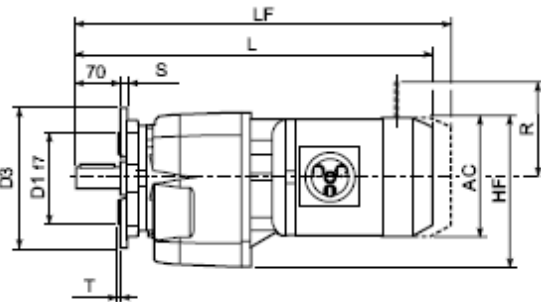
C 41...M



P



U



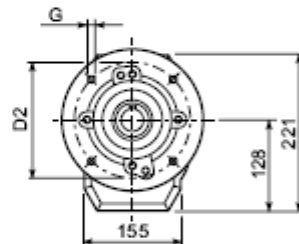
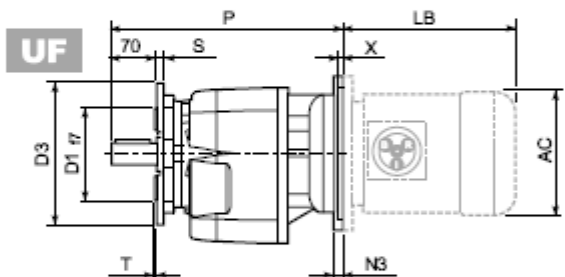
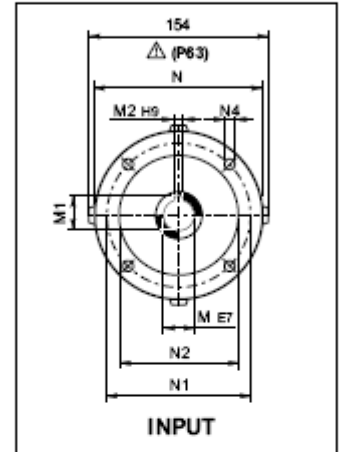
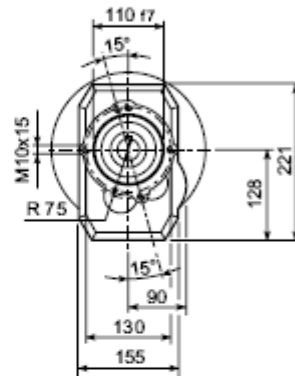
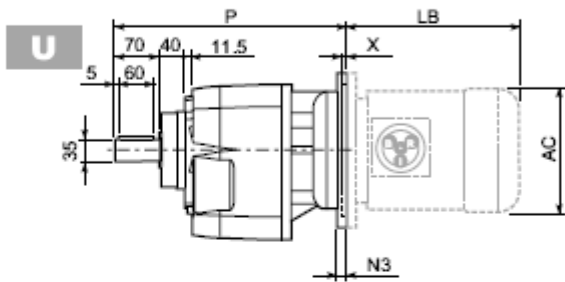
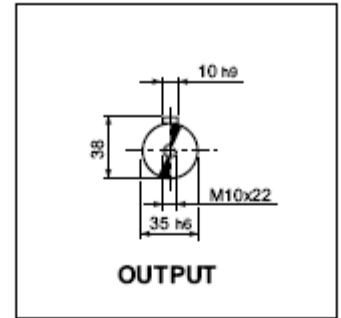
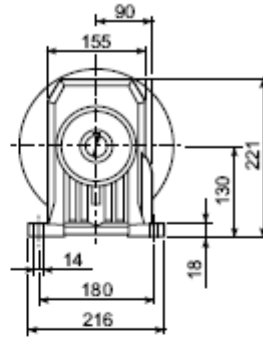
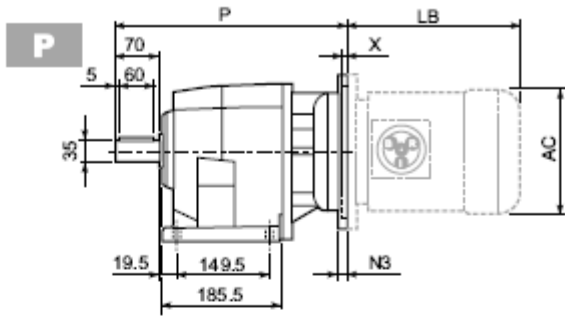
UF

C 41 U						
	D1	D2	D3	G	T	S
FA	130	165	200	11	3.5	11
FB	180	215	250	14	4	13

C 41														
Motor Type	S	M	AC	H	HF	L	AD	Kg	M...FD M...FA		M...FD		M...FA	
									LF	Kg	R	AD	R	AD
C 41 2/3	S1	M1S	138	199	197	467.5	108	25	530.5	27	103	132	124	108
C 41 2/3	S1	M1L	138	199	197	491.5	108	25	552.5	28	103	132	124	108
C 41 2/3	S2	M2S	156	208	206	514.5	119	31	590.5	34	129	143	134	119
C 41 2/3	S3	M3S	195	227.5	225.5	563.5	142	36	659.5	41	160	155	160	142
C 41 2/3	S3	M3L	195	227.5	225.5	595.5	142	45	686.5	50	160	155	160	142
C 41 2/3	S4	M4S	258	259	257	665.5	193	62	774.5	72	226	193	217	193
C 41 2/3	S4	M4L	258	259	257	703.5	193	71	812.5	83	226	193	217	193
C 41 4	S05	M05	231	245.5	243.5	524	95	27	590	28	96	119	116	95
C 41 4	S1	M1S	138	199	197	529	108	28	592	30	103	132	124	108
C 41 4	S1	M1L	138	199	197	553	108	28	614	31	103	132	124	108
C 41 4	S2	M2S	156	208	206	576	119	34	652	37	129	143	134	119
C 41 4	S3	M3S	195	227.5	225.5	625	142	39	721	44	160	155	160	142
C 41 4	S3	M3L	195	227.5	225.5	657	142	48	748	53	160	155	160	142



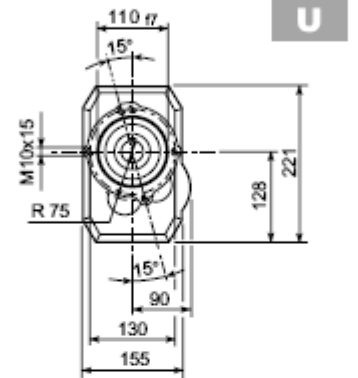
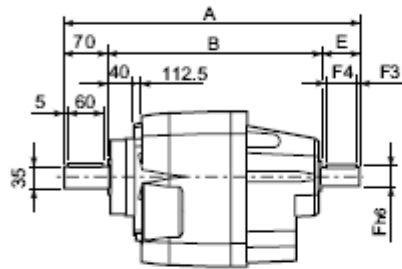
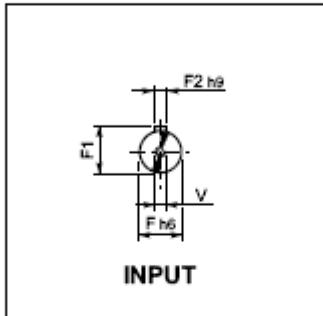
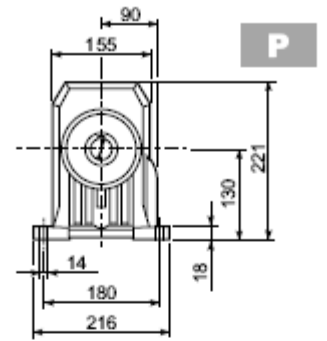
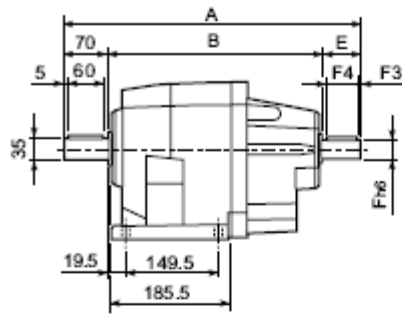
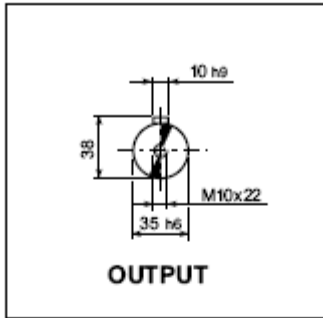
C 41...P(IEC)



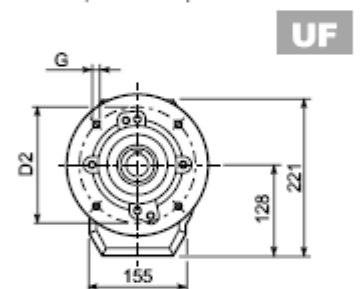
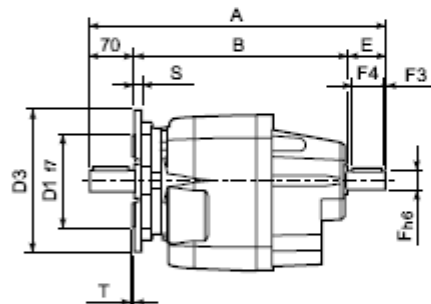
C 41 U						
	D1	D2	D3	G	T	S
FA	130	165	200	11	3.5	11
FB	180	215	250	14	4	13

C 41													BN...		BN...FD BN...FA			
		M	M1	M2	N	N1	N2	N3	N4	X	P			LB	AC	LB	AC	
C 41 2/3	P63	11	12.8	4	140	115	95	—	M8x19	4	336.5	27		BN 63	184	121	249	121
C 41 2/3	P71	14	16.3	5	160	130	110	—	M8x16	4.5	336.5	28		BN 71	219	138	280	138
C 41 2/3	P80	19	21.8	6	200	165	130	—	M10x12	4	356	29		BN 80	234	156	306	156
C 41 2/3	P90	24	27.3	8	200	165	130	—	M10x12	4	356	29		BN 90	276	176	359	176
C 41 2/3	P100	28	31.3	8	250	215	180	—	M12x16	4.5	366	33		BN 100	307	195	398	195
C 41 2/3	P112	28	31.3	8	250	215	180	—	M12x16	4.5	366	33		BN 112	325	219	424	219
C 41 2/3	P132	38	41.3	10	300	265	230	16	14	5	402.5	35		BN 132S	375	258	485	258
														BN 132M	413	258	523	258
C 41 4	P63	11	12.8	4	140	115	95	—	M8x19	4	395	30		BN 63	184	121	249	121
C 41 4	P71	14	16.3	5	160	130	110	—	M8x16	4.5	395	31		BN 71	219	138	280	138
C 41 4	P80	19	21.8	6	200	165	130	—	M10x12	4	414.5	32		BN 80	234	156	306	156
C 41 4	P90	24	27.3	8	200	165	130	—	M10x12	4	414.5	32		BN 90	276	176	359	176
C 41 4	P100	28	31.3	8	250	215	180	—	M12x16	4.5	424.5	36		BN 100	307	195	398	195
C 41 4	P112	28	31.3	8	250	215	180	—	M12x16	4.5	424.5	36		BN 112	325	219	424	219

C 41...HS



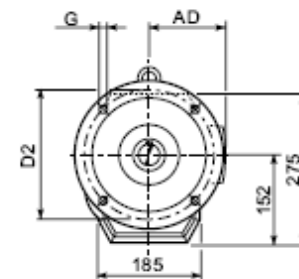
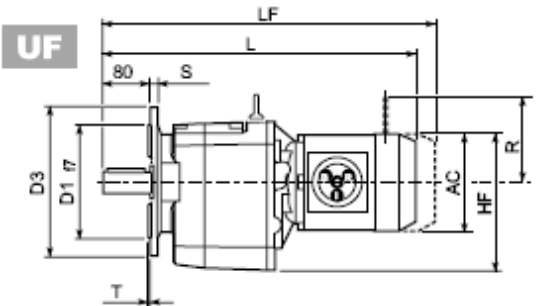
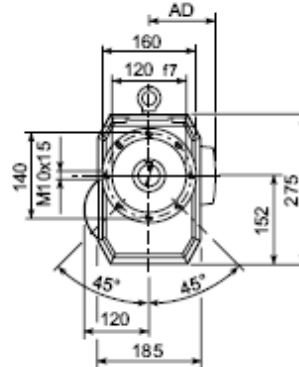
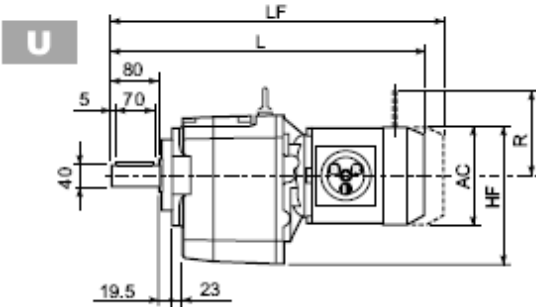
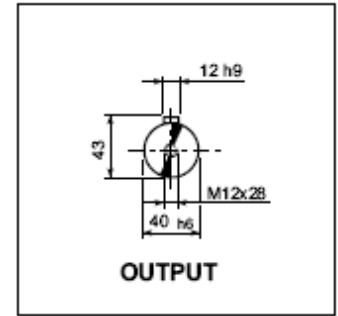
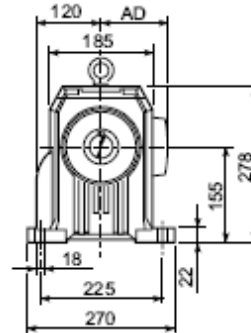
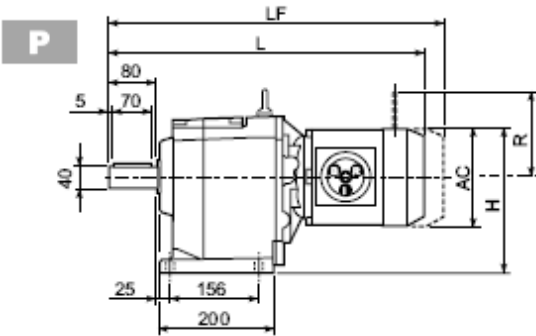
C 41 U						
	D1	D2	D3	G	T	S
FA	130	165	200	11	3.5	11
FB	180	215	250	14	4	13



C 41											
		A	B	E	F	F1	F2	F3	F4	V	⊙
	HS	425.5	305.5	50	24	27	8	2.5	45	M8x19	30
		425.5	305.5	50	24	27	8	2.5	45	M8x19	30
		448	338	40	19	21.5	6	2.5	35	M6x16	33

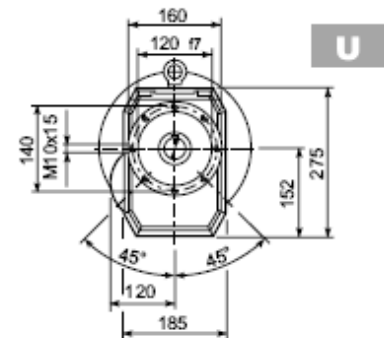
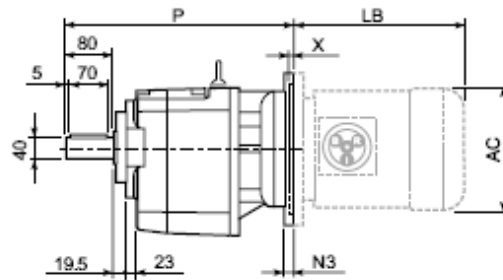
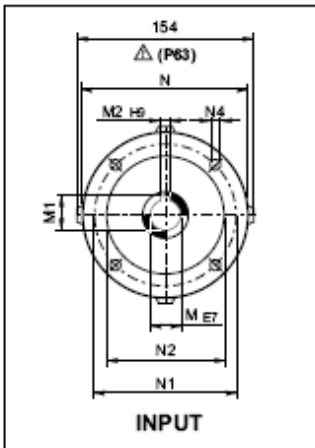
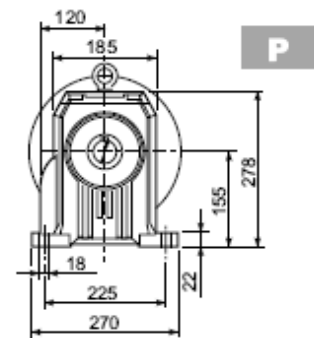
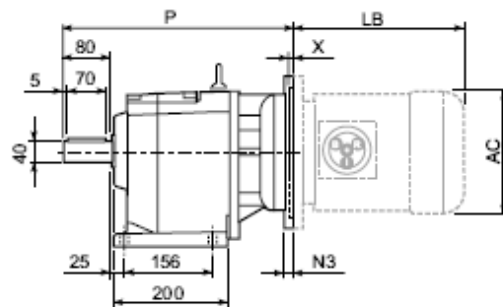
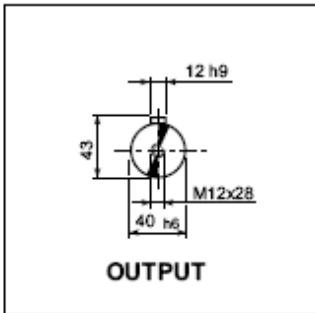


C 51...M

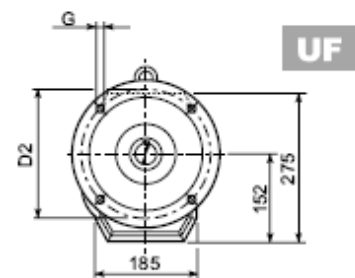
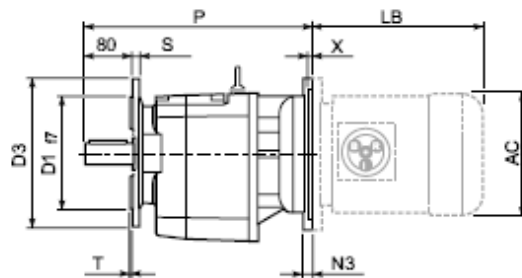


C 51 U						
	D1	D2	D3	G	T	S
FA	180	215	250	14	4	13
FB	230	265	300	14	4	16

C 51														
Motor Type	S	M	AC	H	HF	L	AD	Kg	M...FD M...FA		M...FD		M...FA	
									LF	Kg	R	AD	R	AD
C 51 2/3	S1	M1S	138	224	221	493.5	108	48	556.5	50	103	132	124	108
C 51 2/3	S1	M1L	138	224	221	517.5	108	49	578.5	52	103	132	124	108
C 51 2/3	S2	M2S	156	233	230	540.5	119	53	616.5	57	129	143	134	119
C 51 2/3	S3	M3S	195	252.5	249.5	589.5	142	58	685.5	65	160	155	160	142
C 51 2/3	S3	M3L	195	252.5	249.5	621.5	142	65	712.5	72	160	155	160	142
C 51 2/3	S4	M4S	258	284	281	691.5	193	84	800.5	98	226	193	217	193
C 51 2/3	S4	M4L	258	284	281	729.5	193	99	838.5	117	226	193	217	193
C 51 2/3	S4	M4LC	258	284	281	764.5	193	107	863.5	125	226	193	217	193
C 51 4	S1	M1S	138	224	221	565	108	51	628	54	103	132	124	108
C 51 4	S1	M1L	138	224	221	589	108	52	650	55	103	132	124	108
C 51 4	S2	M2S	156	233	230	612	119	56	688	60	129	143	134	119
C 51 4	S3	M3S	195	252.5	249.5	661	142	61	757	68	160	155	160	142
C 51 4	S3	M3L	195	252.5	249.5	693	142	68	784	75	160	155	160	142



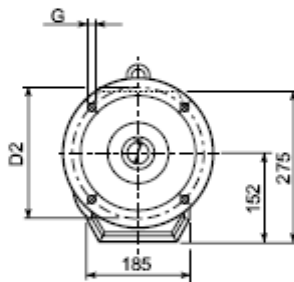
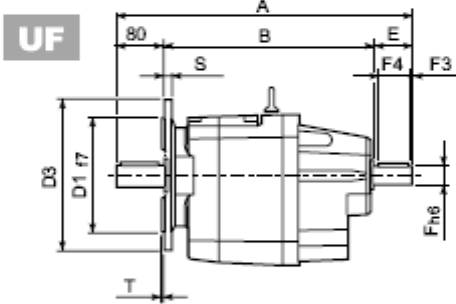
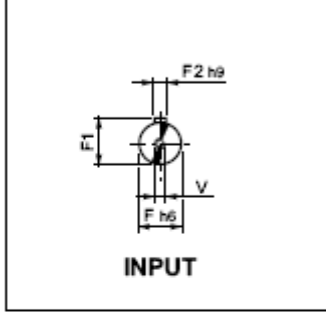
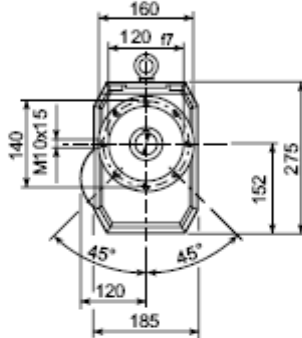
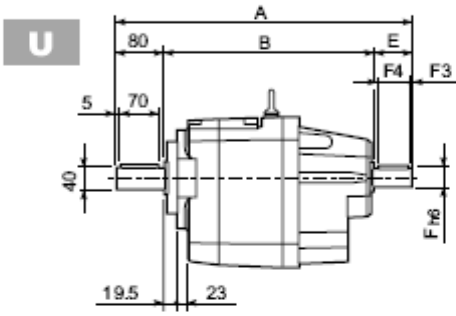
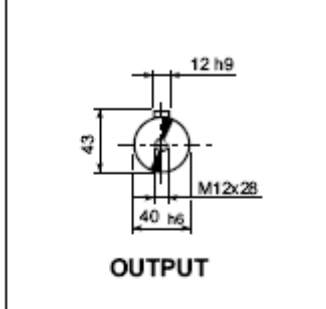
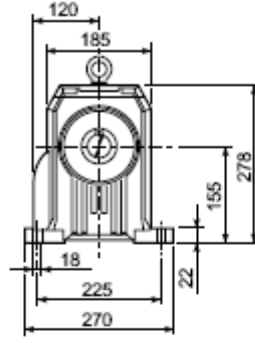
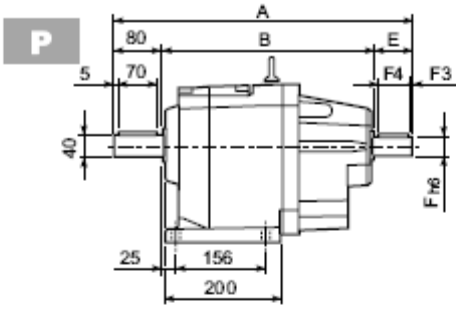
C 51 U						
	D1	D2	D3	G	T	S
FA	180	215	250	14	4	13
FB	230	265	300	14	4	16



C 51													BN...		BN...FD BN...FA		
		M	M1	M2	N	N1	N2	N3	N4	X	P			LB	AC	LB	AC
C 51 2/3	P63	11	12.8	4	140	115	95	—	M8x19	4	362.5	45	BN 63	184	121	249	121
C 51 2/3	P71	14	16.3	5	160	130	110	—	M8x16	4.5	362.5	45	BN 71	219	138	280	138
C 51 2/3	P80	19	21.8	6	200	165	130	—	M10x12	4	382	47	BN 80	234	156	306	156
C 51 2/3	P90	24	27.3	8	200	165	130	—	M10x12	4	382	47	BN 90	276	176	359	176
C 51 2/3	P100	28	31.3	8	250	215	180	—	M12x16	4.5	392	51	BN 100	307	195	398	195
C 51 2/3	P112	28	31.3	8	250	215	180	—	M12x16	4.5	392	51	BN 112	325	219	424	219
C 51 2/3	P132	38	41.3	10	300	265	230	16	14	5	428.5	54	BN 132S	375	258	485	258
													BN 132M	413	258	523	258
C 51 2/3	P160	42	45.3	12	350	300	250	23	18	5.5	479	58	BN 160MR	452	258	562	258
													BN 160M/L	486	310	626	310
													BN 180M	530	310	670	310
C 51 2/3	P180	48	51.8	14	350	300	250	23	18	5.5	479	58	BN 180L	598	348	756	348
C 51 4	P63	11	12.8	4	140	115	95	—	M8x19	4	434	47	BN 63	184	121	249	121
C 51 4	P71	14	16.3	5	160	130	110	—	M8x16	4.5	434	47	BN 71	219	138	280	138
C 51 4	P80	19	21.8	6	200	165	130	—	M10x12	4	453.5	49	BN 80	234	156	306	156
C 51 4	P90	24	27.3	8	200	165	130	—	M10x12	4	463.5	49	BN 90	276	176	359	176
C 51 4	P100	28	31.3	8	250	215	180	—	M12x16	4.5	463.5	53	BN 100	307	195	398	195
C 51 4	P112	28	31.3	8	250	215	180	—	M12x16	4.5	463.5	53	BN 112	325	219	424	219

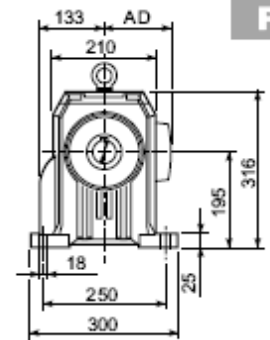
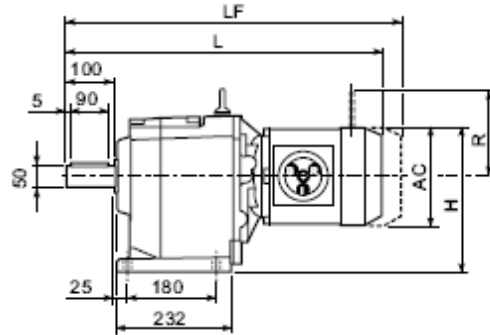
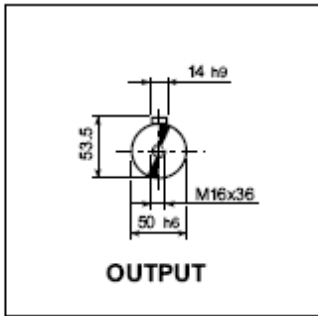


C 51...HS

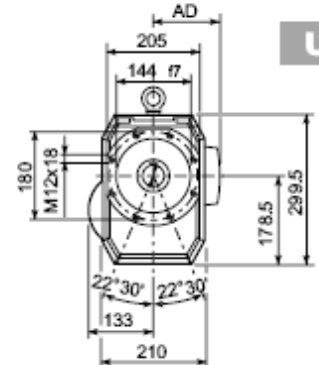
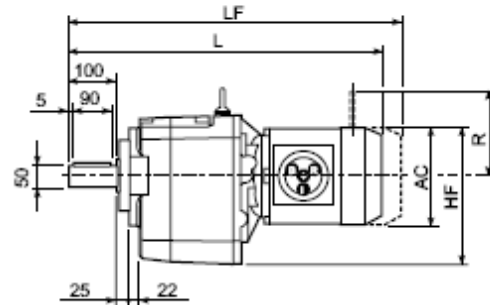


C 51 U						
	D1	D2	D3	G	T	S
FA	180	215	250	14	4	13
FB	230	265	300	14	4	16

C 51											
		A	B	E	F	F1	F2	F3	F4	V	kg
C 51 2	HS	451.5	322	50	24	24	8	2.5	45	M8x19	45
C 51 3		451.5	322	50	24	24	8	2.5	45	M8x19	45
C 51 4		484	364	40	19	21.5	6	2.5	35	M6x16	48

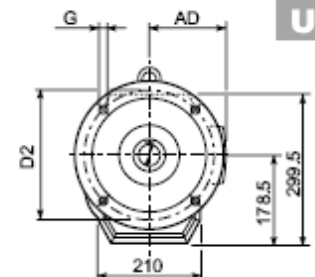
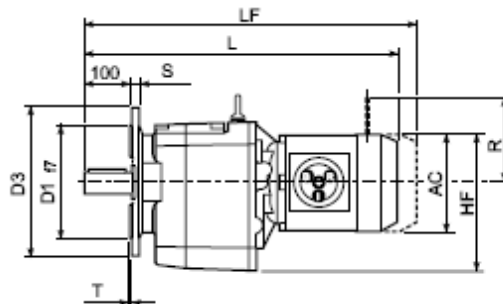


P



U

C 61 U						
	D1	D2	D3	G	T	S
FA	230	265	300	14	4	16
FB	250	300	350	18	5	18

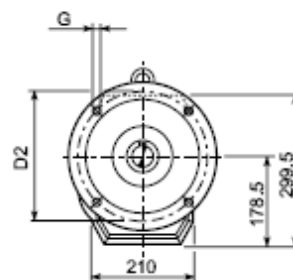
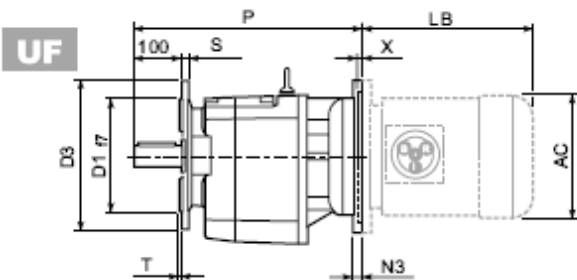
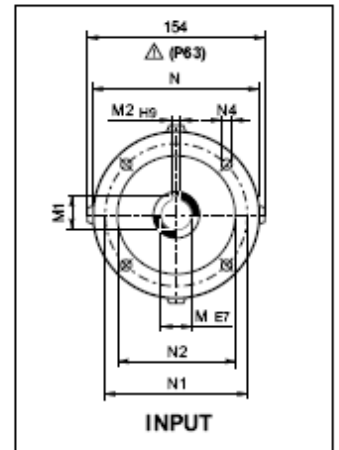
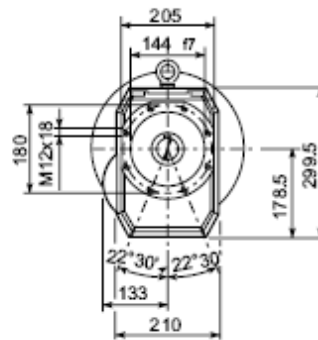
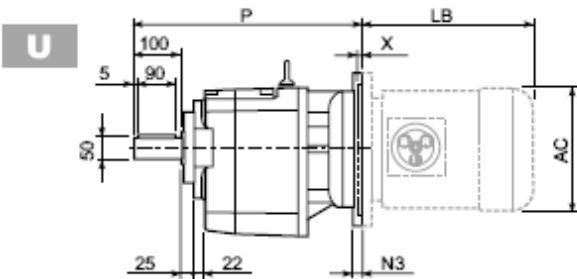
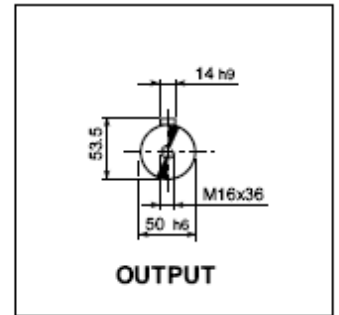
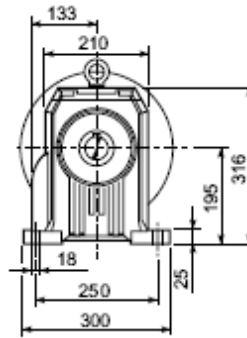
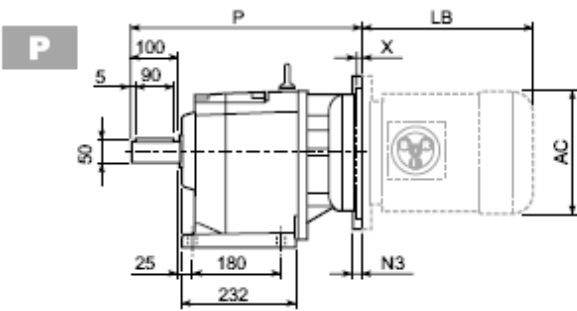


UF

C 61															
			C 61							M...FD M...FA		M...FD		M...FA	
			AC	H	HF	L	AD	Kg	LF	Kg	R	AD	R	AD	
C 61 2/3	S2	M2S	156	273	256.5	593.5	119	61	669.5	65	129	143	134	119	
C 61 2/3	S3	M3S	195	292.5	276	642.5	142	66	738.5	74	160	155	160	142	
C 61 2/3	S3	M3L	195	292.5	276	674.5	142	74	765.5	81	160	155	160	142	
C 61 2/3	S4	M4S	258	324	307.5	744.5	193	93	853.5	107	226	193	217	193	
C 61 2/3	S4	M4L	258	324	307.5	782.5	193	108	891.5	126	226	193	217	193	
C 61 2/3	S4	M4LC	258	324	307.5	817.5	193	116	916.5	134	226	193	217	193	
C 61 2/3	S5	M5S	310	350	333.5	869	245	136	1009	166	266	245	247	234	
C 61 2/3	S5	M5L	310	350	333.5	913	245	152	1053	182	266	245	247	234	
C 61 4	S1	M1S	138	264	247.5	617	108	69	680	72	103	132	124	108	
C 61 4	S1	M1L	138	264	247.5	641	108	71	702	74	103	132	124	108	
C 61 4	S2	M2S	156	273	256.5	664	119	75	740	78	129	143	134	119	
C 61 4	S3	M3S	195	292.5	276	713	142	79	809	87	160	155	160	142	
C 61 4	S3	M3L	195	292.5	276	745	142	87	836	94	160	155	160	142	



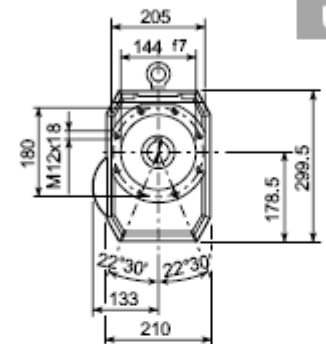
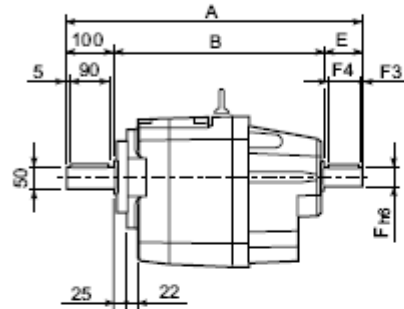
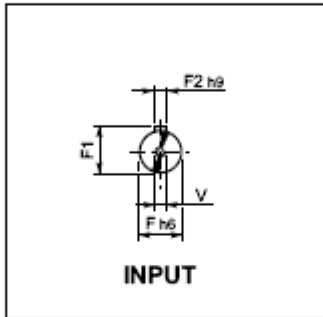
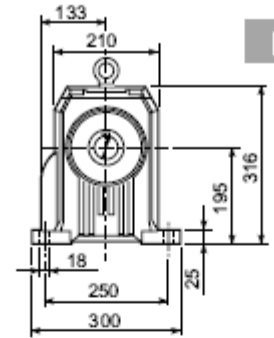
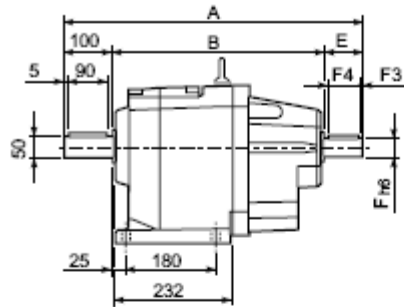
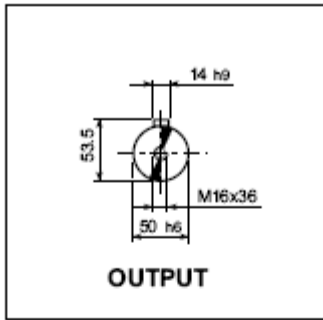
C 61...P(IEC)



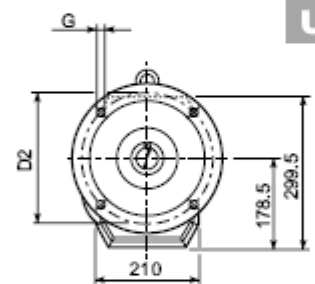
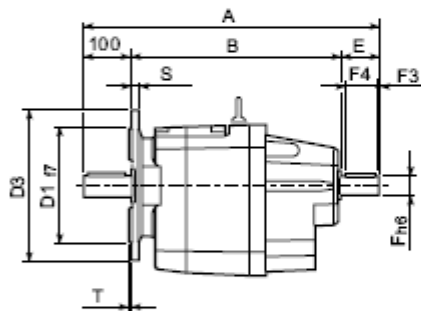
C 61_U						
	D1	D2	D3	G	T	S
FA	230	265	300	14	4	16
FB	250	300	350	18	5	18

C 61													BN...		BN...FD BN...FA		
		M	M1	M2	N	N1	N2	N3	N4	X	P	K_g		LB	AC	LB	AC
C 61 2/3	P63	11	12.8	4	140	115	95	—	M8x19	4	415.5	55	BN 63	184	121	249	121
C 61 2/3	P71	14	16.3	5	160	130	110	—	M8x16	4.5	415.5	57	BN 71	219	138	280	138
C 61 2/3	P80	19	21.8	6	200	165	130	—	M10x12	4	435	61	BN 80	234	156	306	156
C 61 2/3	P90	24	27.3	8	200	165	130	—	M10x12	4	435	61	BN 90	276	176	359	176
C 61 2/3	P100	28	31.3	8	250	215	180	—	M12x16	4.5	444	65	BN 100	307	195	398	195
C 61 2/3	P112	28	31.3	8	250	215	180	—	M12x16	4.5	444	65	BN 112	325	219	424	219
C 61 2/3	P132	38	41.3	10	300	265	230	16	14	5	481.5	68	BN 132S	375	258	485	258
													BN 132M	413	258	523	258
C 61 2/3	P160	42	45.3	12	350	300	250	23	18	5.5	532	73	BN 160MR	452	258	562	258
													BN 160M/L	486	310	626	310
C 61 2/3	P180	48	51.8	14	350	300	250	23	18	5.5	532	73	BN 180M	530	310	670	310
													BN 180L	598	348	756	348
C 61 4	P63	11	12.8	4	140	115	95	—	M8x19	4	486	61	BN 63	184	121	249	121
C 61 4	P71	14	16.3	5	160	130	110	—	M8x16	4.5	489	63	BN 71	219	138	280	138
C 61 4	P80	19	21.8	6	200	165	130	—	M10x12	4	505.5	67	BN 80	234	156	306	156
C 61 4	P90	24	27.3	8	200	165	130	—	M10x12	4	505.5	67	BN 90	276	176	359	176
C 61 4	P100	28	31.3	8	250	215	180	—	M12x16	4.5	515.5	71	BN 100	307	195	398	195
C 61 4	P112	28	31.3	8	250	215	180	—	M12x16	4.5	515.5	71	BN 112	325	219	424	219

C 61...HS



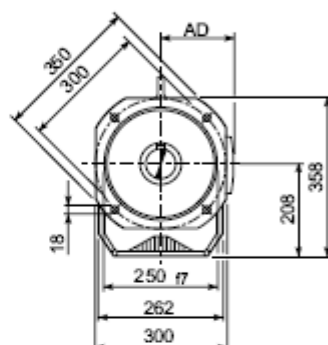
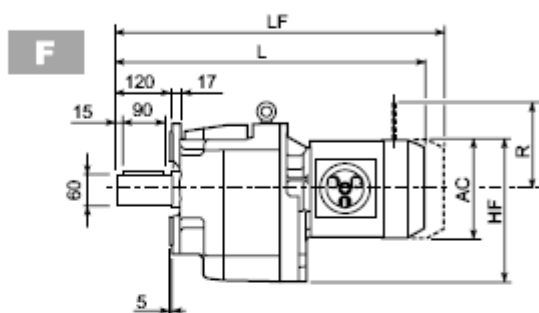
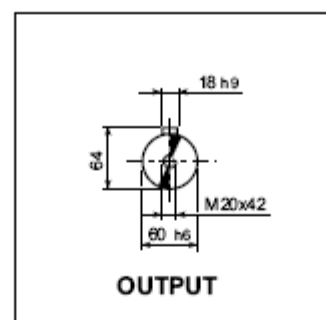
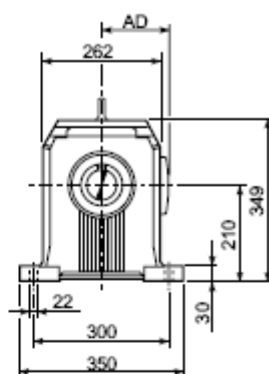
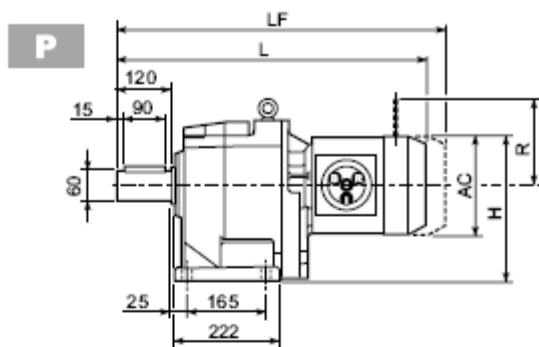
C 61_U						
	D1	D2	D3	G	T	S
FA	230	265	300	14	4	16
FB	250	300	350	18	5	18



C 61												
		A	B	E	F	F1	F2	F3	F4	V		
	HS	C 61 2	532	372	60	28	31	8	5	50	M10x22	66
C 61 3		532	372	60	28	31	8	5	50	M10x22	66	
C 61 4		575	425	50	24	27	8	2.5	35	M8x19	72	

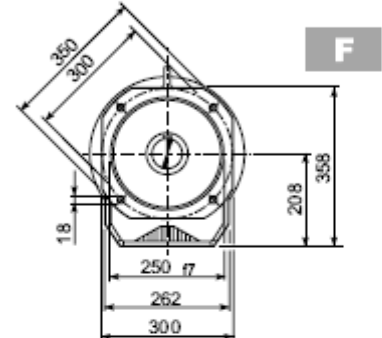
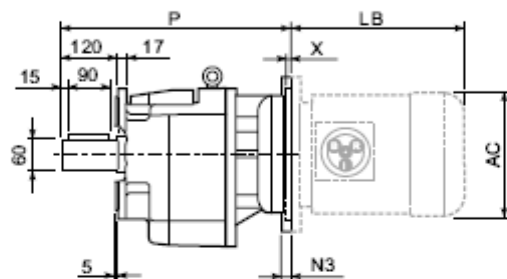
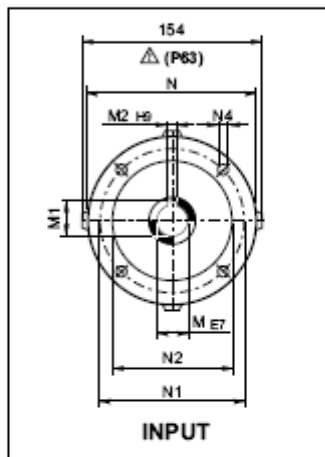
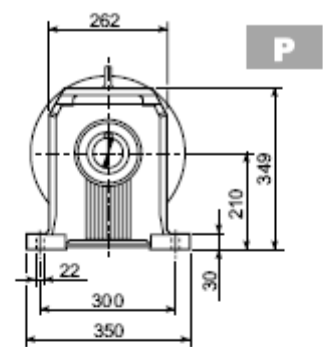
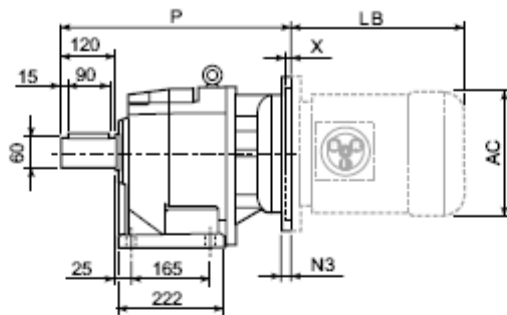
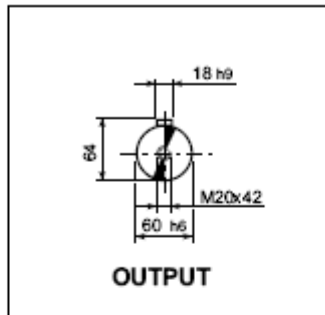


C 70...M



C 70														
Motor Icon	Type	Code	AC	H	HF	L	AD	Kg	M...FD		M...FD		M...FA	
									LF	Kg	R	AD	R	AD
C 70 2/3	S2	M2S	156	288	286	631.5	119	88	707.5	92	129	143	134	119
C 70 2/3	S3	M3S	195	307.5	305.5	680.5	142	93	776.5	101	160	155	160	142
C 70 2/3	S3	M3L	195	307.5	305.5	712.5	142	101	803.5	108	160	155	160	142
C 70 2/3	S4	M4S	258	339	337	782.5	193	120	891.5	134	226	193	217	193
C 70 2/3	S4	M4L	258	339	337	820.5	193	135	929.5	153	226	193	217	193
C 70 2/3	S4	M4LC	258	339	337	855.5	193	143	954.5	161	226	193	217	193
C 70 2/3	S5	M5S	310	365	363	907	245	163	1047	193	266	245	247	234
C 70 2/3	S5	M5L	310	365	363	951	245	179	1091	209	266	245	247	234
C 70 4	S1	M1S	138	279	277	635.5	108	87	698.5	90	103	132	124	108
C 70 4	S1	M1L	138	279	277	659.5	108	88	720.5	91	103	132	124	108
C 70 4	S2	M2S	156	288	286	682.5	119	92	758.5	96	129	143	134	119
C 70 4	S3	M3S	195	307.5	305.5	731.5	142	97	827.5	104	160	155	160	142
C 70 4	S3	M3L	195	307.5	305.5	763.5	142	104	854.5	111	160	155	160	142
C 70 4	S4	M4S	258	339	337	833.5	193	123	942.5	137	226	193	217	193
C 70 4	S4	M4L	258	339	337	871.5	193	138	980.5	156	226	193	217	193

C 70...P(IEC)

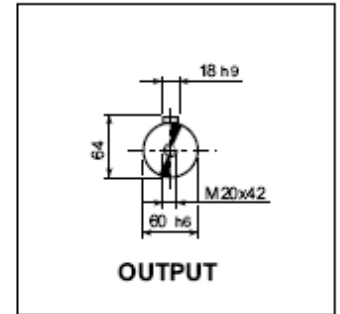
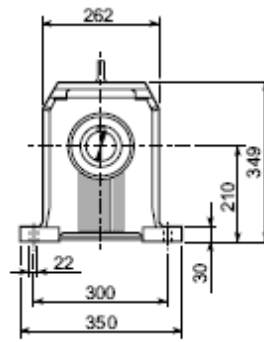
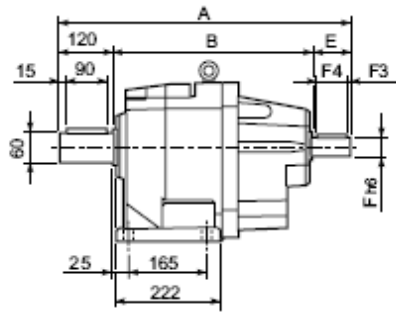


C 70													BN...		BN...FD BN...FA		
		M	M1	M2	N	N1	N2	N3	N4	X	P		LB	AC	LB	AC	
C 70 2/3	P80	19	21.8	6	200	165	130	—	M10x12	4	473	88	BN 80	234	156	306	156
C 70 2/3	P90	24	27.3	8	200	165	130	—	M10x12	4	473	88	BN 90	276	176	359	176
C 70 2/3	P100	28	31.3	8	250	215	180	—	M12x16	4.5	483	92	BN 100	307	195	398	195
C 70 2/3	P112	28	31.3	8	250	215	180	—	M12x16	4.5	483	92	BN 112	325	219	424	219
C 70 2/3	P132	38	41.3	10	300	265	230	16	14	5	519.5	95	BN 132S	375	258	485	258
C 70 2/3	P160	42	45.3	12	350	300	250	23	18	6	575	107	BN 132M	413	258	523	258
													BN 160MR	452	258	562	258
C 70 2/3	P180	48	51.8	14	350	300	250	23	18	6	575	107	BN 160M/L	486	310	626	310
													BN 180M	530	310	670	310
C 70 2/3	P200	55	59.3	16	400	350	300	—	M16x25	7	600	129	BN 180L	598	348	756	348
													BN 200L	612	348	768	348
C 70 4	P63	11	12.8	4	140	115	95	—	M8x19	4	504.5	91	BN 63	184	121	249	121
C 70 4	P71	14	16.3	5	160	130	110	—	M8x16	4.5	504.5	91	BN 71	219	138	280	138
C 70 4	P80	19	21.8	6	200	165	130	—	M10x12	4	524	92	BN 80	234	156	306	156
C 70 4	P90	24	27.3	8	200	165	130	—	M10x12	4	524	92	BN 90	276	176	359	176
C 70 4	P100	28	31.3	8	250	215	180	—	M12x16	4.5	534	96	BN 100	307	195	398	195
C 70 4	P112	28	31.3	8	250	215	180	—	M12x16	4.5	534	96	BN 112	325	219	424	219
C 70 4	P132	38	41.3	10	300	265	230	16	14	5	570.5	98	BN 132S	375	258	485	258
													BN 132M	413	258	523	258

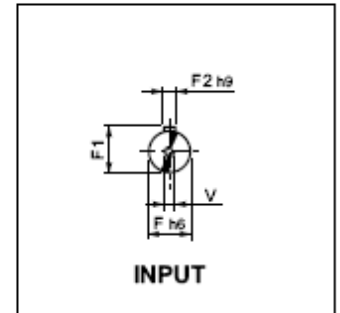
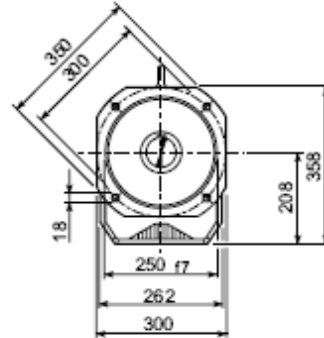
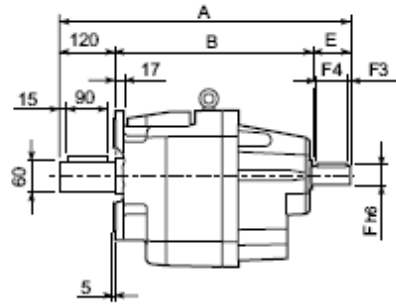


C 70...HS


P



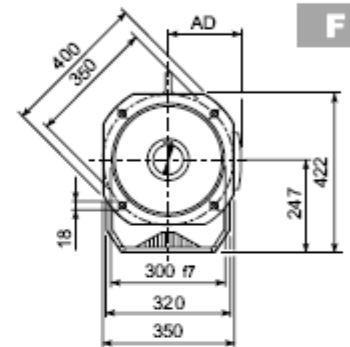
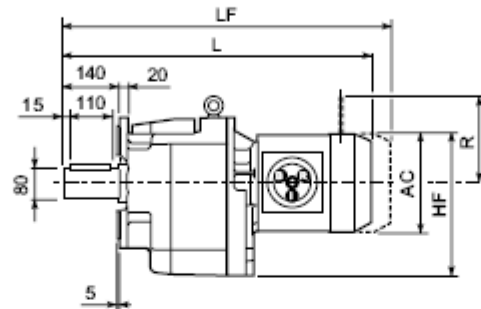
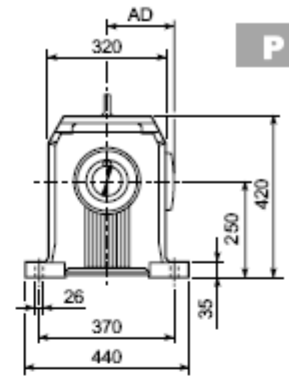
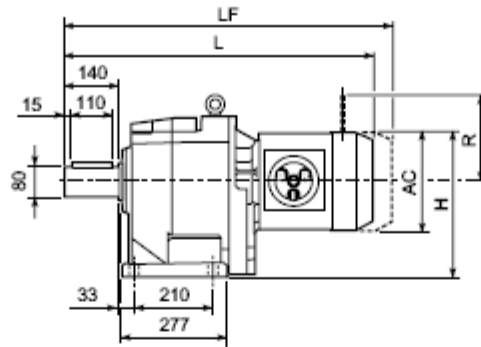
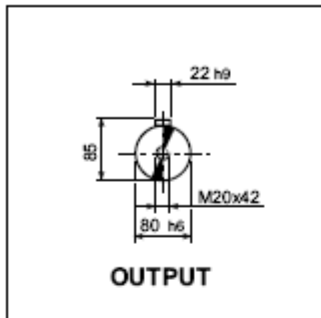
F







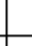
C 70

		A	B	E	F	F1	F2	F3	F4	V	
C 70 2	HS	657.5	427.5	110	42	45	12	10	90	M12x28	108
C 70 3		657.5	427.5	110	42	45	12	10	90	M12x28	108
C 70 4		593.5	423.5	50	24	27	8	2.5	45	M8x19	94

C 80...M



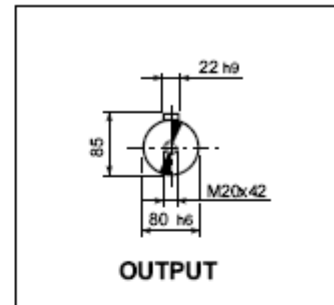
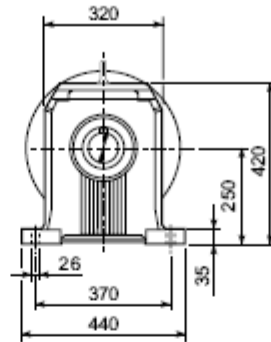
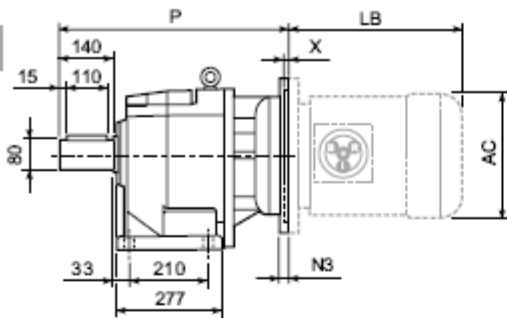
C 80

  	C 80								M...FD M...FA		M...FD		M...FA	
	AC	H	HF	L	AD		LF		R	AD	R	AD		
C 80 2/3 S3 M3S	195	347.5	344.5	742.5	142	139	838.5	146	160	155	160	142		
C 80 2/3 S3 M3L	195	347.5	344.5	774.5	142	146	865.5	153	160	155	160	142		
C 80 2/3 S4 M4S	258	379	376	844.5	193	165	953.5	178	226	193	217	193		
C 80 2/3 S4 M4L	258	379	376	882.5	193	180	991.5	196	226	193	217	193		
C 80 2/3 S4 M4LC	258	379	376	917.5	193	188	1016.5	204	226	193	217	193		
C 80 2/3 S5 M5S	310	405	402	969	245	208	1109	238	266	245	247	234		
C 80 2/3 S5 M5L	310	405	402	1013	245	224	1153	254	266	245	247	234		
C 80 4 S1 M1S	138	319	316	709.5	108	132	772.5	135	103	132	124	108		
C 80 4 S1 M1L	138	319	316	733.5	108	133	794.5	136	103	132	124	108		
C 80 4 S2 M2S	156	328	325	756.5	119	137	832.5	141	129	143	134	119		
C 80 4 S3 M3S	195	347.5	344.5	805.5	142	142	901.5	149	160	155	160	142		
C 80 4 S3 M3L	195	347.5	344.5	837.5	142	149	928.5	156	160	155	160	142		
C 80 4 S4 M4S	258	379	376	907.5	193	168	1016.5	182	226	193	217	193		
C 80 4 S4 M4L	258	379	376	945.5	193	183	1054.5	201	226	193	217	193		

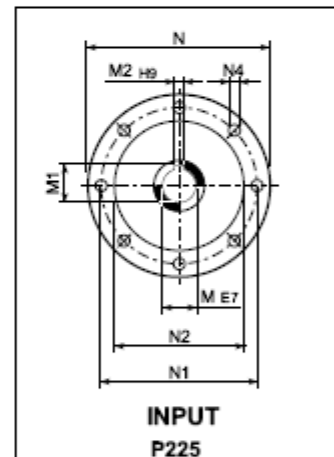
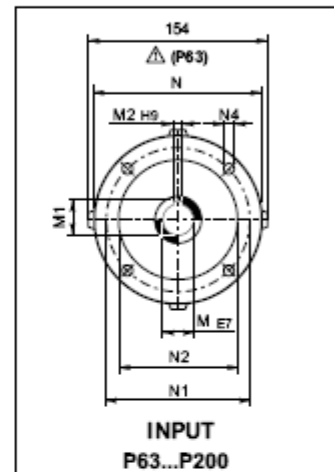
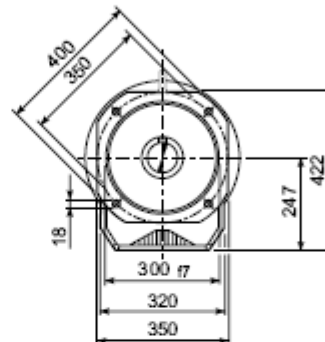
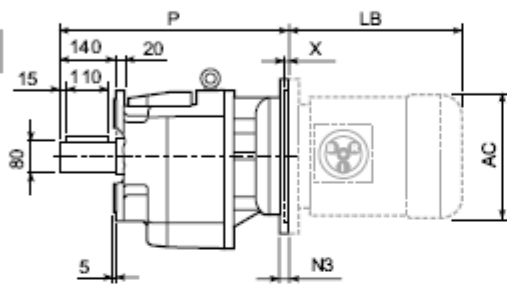


C 80...P(IEC)

P

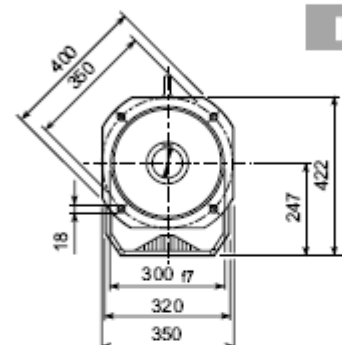
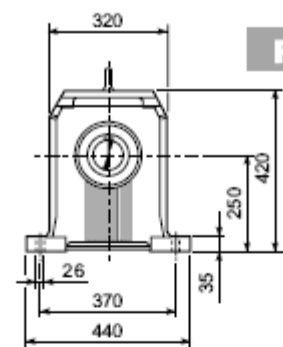
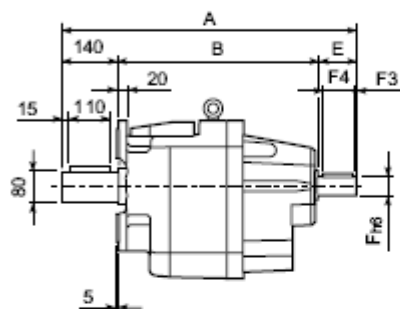
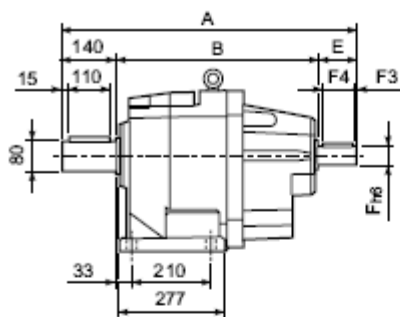
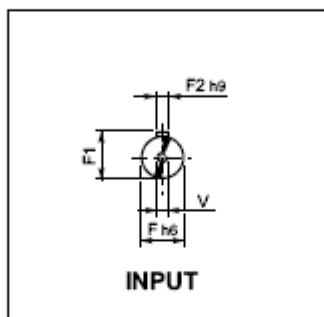
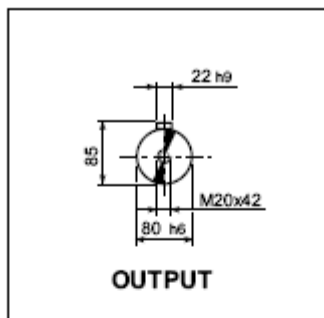


F



C 80													BN...		BN...FD BN...FA		
		M	M1	M2	N	N1	N2	N3	N4	X	P		LB	AC	LB	AC	
C 80 2/3	P80	19	21.8	6	200	165	130	—	M10x12	4	533	135	BN 80	234	156	306	156
C 80 2/3	P90	24	27.3	8	200	165	130	—	M10x12	4	533	135	BN 90	276	176	359	176
C 80 2/3	P100	28	31.3	8	250	215	180	—	M12x16	4.5	543	139	BN 100	307	195	398	195
C 80 2/3	P112	28	31.3	8	250	215	180	—	M12x16	4.5	543	139	BN 112	325	219	424	219
C 80 2/3	P132	38	41.3	10	300	265	230	16	14	5	579.5	141	BN 132S	375	258	485	258
													BN 132M	413	258	523	258
C 80 2/3	P160	42	45.3	12	350	300	250	23	18	6	635	154	BN 160MR	452	258	562	258
													BN 160M/L	486	310	626	310
C 80 2/3	P180	48	51.8	14	350	300	250	23	18	6	635	154	BN 180M	530	310	670	310
													BN 180L	598	348	756	348
C 80 2/3	P200	55	59.3	16	400	350	300	—	M16x25	7	660	176	BN 200L	612	348	768	348
C 80 2/3	P225	60	64.4	18	450	400	350	25	18	6	705.5	178	BN 225	—	—	—	—
C 80 4	P63	11	12.8	4	140	115	95	—	M8x19	4	576.5	138	BN 63	184	121	249	121
C 80 4	P71	14	16.3	5	160	130	110	—	M8x16	4.5	576.5	138	BN 71	219	138	280	138
C 80 4	P80	19	21.8	6	200	165	130	—	M10x12	4	596	140	BN 80	234	156	306	156
C 80 4	P90	24	27.3	8	200	165	130	—	M10x12	4	596	140	BN 90	276	176	359	176
C 80 4	P100	28	31.3	8	250	215	180	—	M12x16	4.5	606	144	BN 100	307	195	398	195
C 80 4	P112	28	31.3	8	250	215	180	—	M12x16	4.5	606	144	BN 112	325	219	424	219
													BN 132S	375	258	485	258
C 80 4	P132	38	41.3	10	300	265	230	16	M12x16	5	642.5	146	BN 132M	413	258	523	258

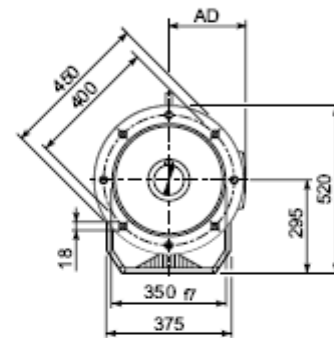
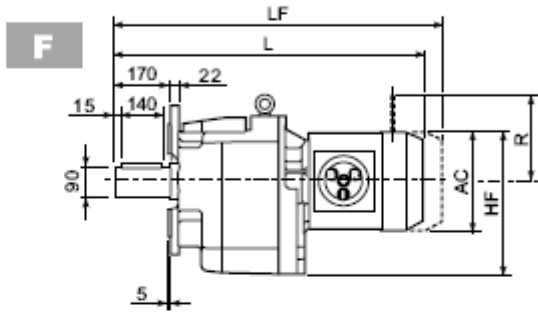
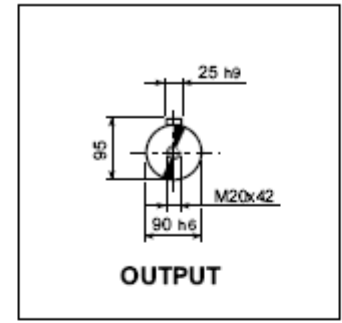
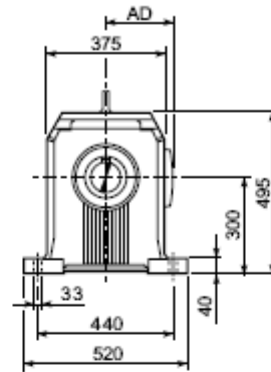
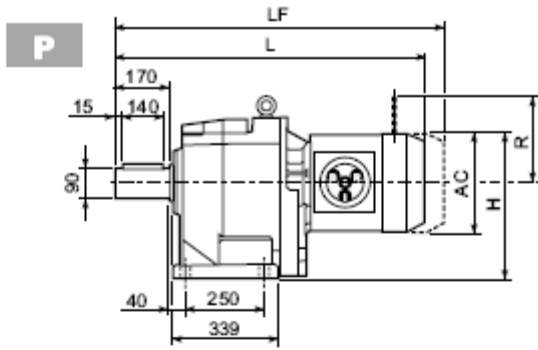
C 80...HS



C 80											
		A	B	E	F	F1	F2	F3	F4	V	
	HS	718.5	468.5	110	42	45	12	10	90	M12x28	154
C 80 3		718.5	468.5	110	42	45	12	10	90	M12x28	154
C 80 4		666.5	476.5	50	24	27	8	2.5	45	M8x19	141

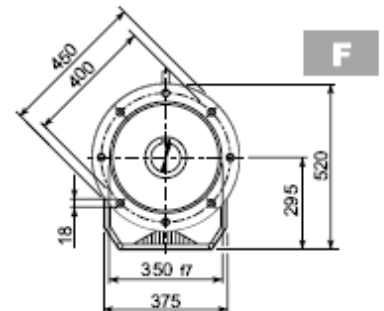
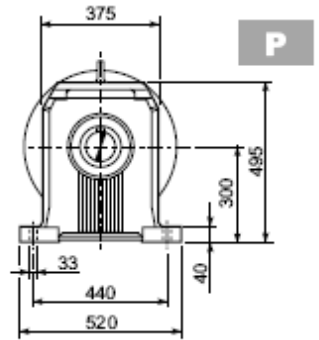
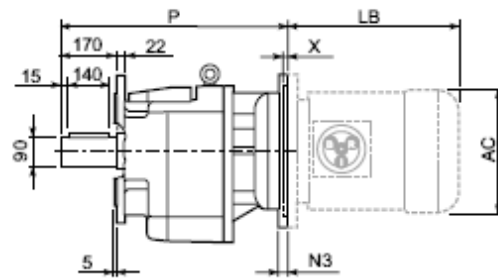
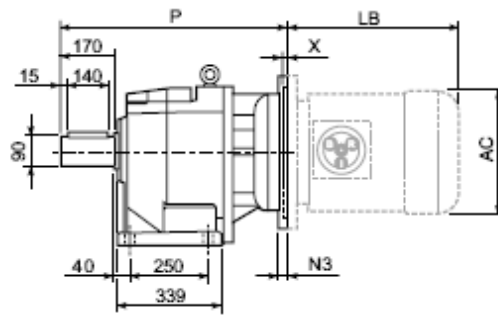
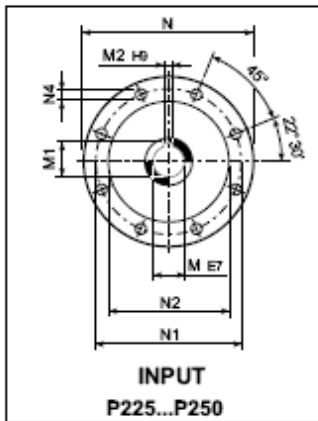
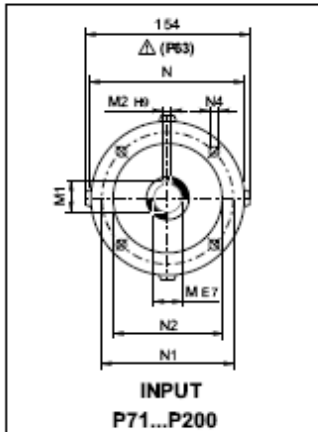
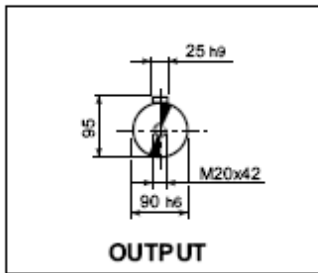


C 90...M



C 90															
Motor Icon	S	M	Dimensions							M...FD M...FA		M...FD		M...FA	
			AC	H	HF	L	AD	Weight (kg)	LF	Weight (kg)	R	AD	R	AD	
C 90 2/3	S3	M3S	195	397.5	392.5	852	142	228	948	236	160	155	160	142	
C 90 2/3	S3	M3L	195	397.5	392.5	884	142	236	975	243	160	155	160	142	
C 90 2/3	S4	M4S	258	429	424	954	193	255	1063	269	226	193	217	193	
C 90 2/3	S4	M4L	258	429	424	992	193	270	1101	288	226	193	217	193	
C 90 2/3	S4	M4LC	258	429	424	1027	193	278	1126	296	226	193	217	193	
C 90 2/3	S5	M5S	310	455	450	1078.5	245	298	1218.5	328	266	245	247	234	
C 90 2/3	S5	M5L	310	455	450	1122.5	245	314	1262.5	344	266	245	247	234	
C 90 4	S2	M2S	156	378	373	886	119	234	962	238	129	143	134	119	
C 90 4	S3	M3S	195	397.5	392.5	935	142	239	1031	246	160	155	160	142	
C 90 4	S3	M3L	195	397.5	392.5	967	142	246	1058	253	160	155	160	142	
C 90 4	S4	M4S	258	429	424	1037	193	265	1146	279	226	193	217	193	
C 90 4	S4	M4L	258	429	424	1075	193	280	1184	298	226	193	217	193	

C 90...P(IEC)

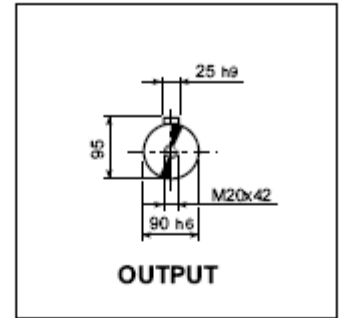
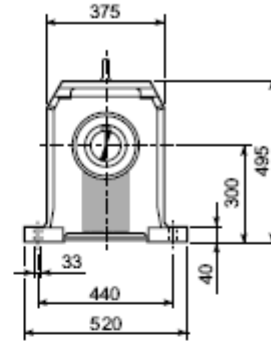
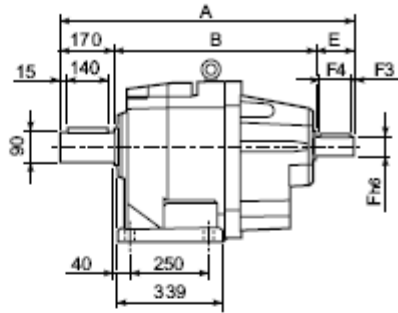


C 90													BN...		BN...FD BN...FA		
		M	M1	M2	N	N1	N2	N3	N4	X	P		LB	AC	LB	AC	
C 90 2/3	P80	19	21.8	6	200	165	130	—	M10x12	4	644.5	229	BN 80	234	156	306	156
C 90 2/3	P90	24	27.3	8	200	165	130	—	M10x12	4	644.5	229	BN 90	276	176	359	176
C 90 2/3	P100	28	31.3	8	250	215	180	—	M12x16	4.5	654.5	234	BN 100	307	195	398	195
C 90 2/3	P112	28	31.3	8	250	215	180	—	M12x16	4.5	654.5	234	BN 112	325	219	424	219
C 90 2/3	P132	38	41.3	10	300	265	230	16	14	5	691	236	BN 132S	375	258	485	258
													BN 132M	413	258	523	258
C 90 2/3	P160	42	45.3	12	350	300	250	23	18	6	746.5	251	BN 160MR	452	258	562	258
													BN 160M/L	486	310	626	310
C 90 2/3	P180	48	51.8	14	350	300	250	23	18	6	746.5	251	BN 180M	530	310	670	310
													BN 180L	598	348	756	348
C 90 2/3	P200	55	59.3	16	400	350	300	—	M16x25	7	771.5	272	BN 200L	612	348	768	348
C 90 2/3	P225	60	64.4	18	450	400	350	30	18	6	817	273	BN 225	—	—	—	—
C 90 2/3	P250	65	69.4	18	550	500	450	30	18	6	847	295	BN 250	—	—	—	—
C 90 4	P71	14	16.3	5	160	130	110	—	M8x16	4.5	707.5	236	BN 71	219	138	280	138
C 90 4	P80	19	21.8	6	200	165	130	—	M10x12	4	727	238	BN 80	234	156	308	156
C 90 4	P90	24	27.3	8	200	165	130	—	M10x12	4	727	238	BN 90	276	176	359	176
C 90 4	P100	28	31.3	8	250	215	180	—	M12x16	4.5	737	242	BN 100	307	195	398	195
C 90 4	P112	28	31.3	8	250	215	180	—	M12x16	4.5	737	242	BN 112	325	219	424	219
C 90 4	P132	38	41.3	10	300	265	230	16	14	5	773.5	244	BN 132S	375	258	485	258
													BN 132M	413	258	523	258
C 90 4	P160	42	45.3	12	350	300	250	23	18	5.5	824	248	BN 160MR	452	258	562	258
													BN 160M/L	486	310	626	310
C 90 4	P180	48	51.8	14	350	300	250	23	18	5.5	824	248	BN 180M	530	310	670	310
													BN 180L	598	348	756	348

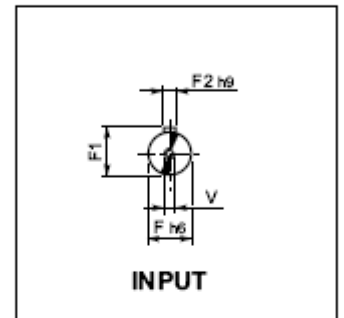
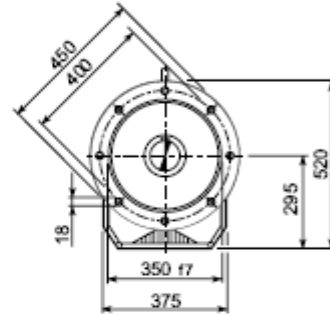
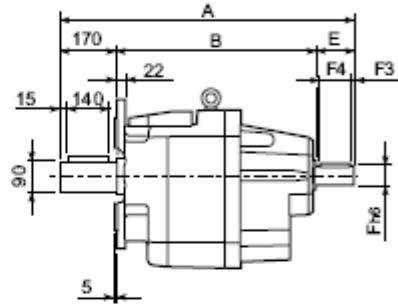


C 90...HS

P

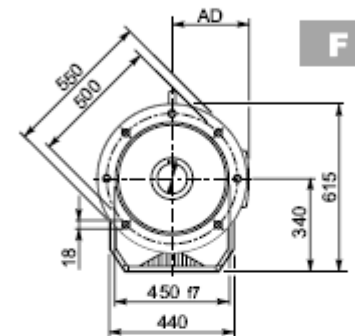
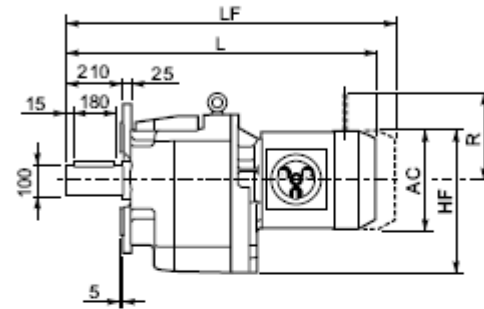
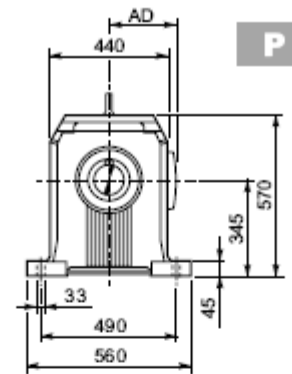
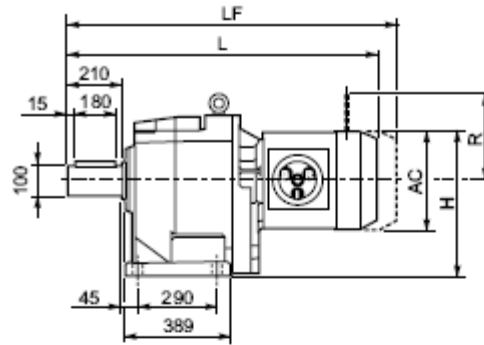
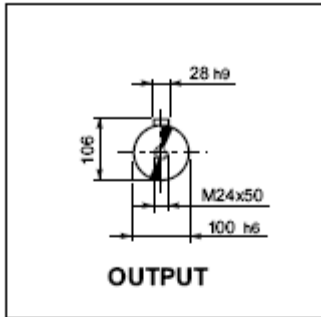





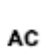
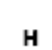
F



C 90

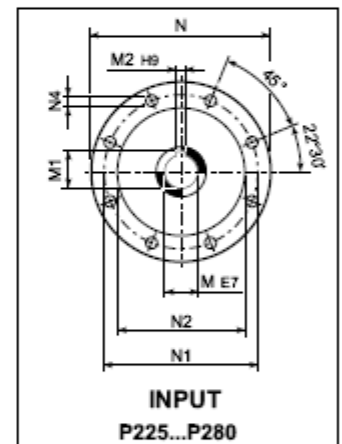
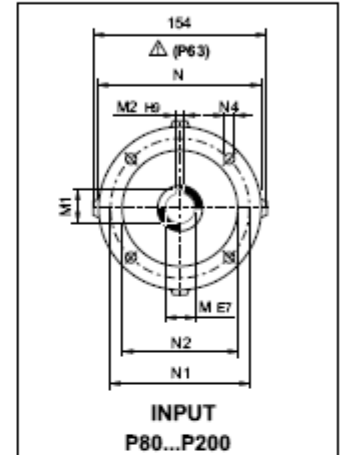
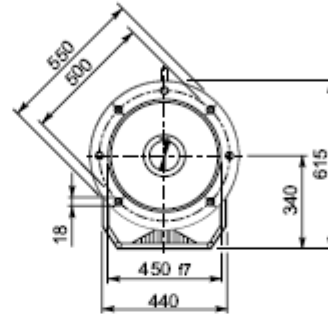
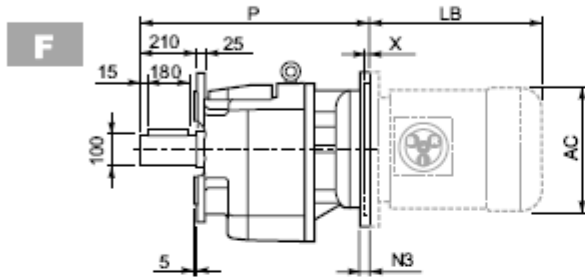
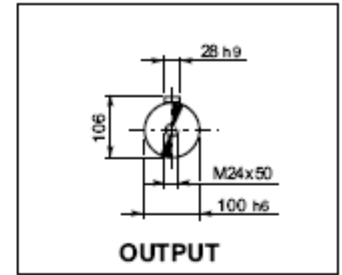
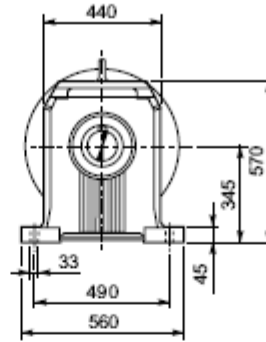
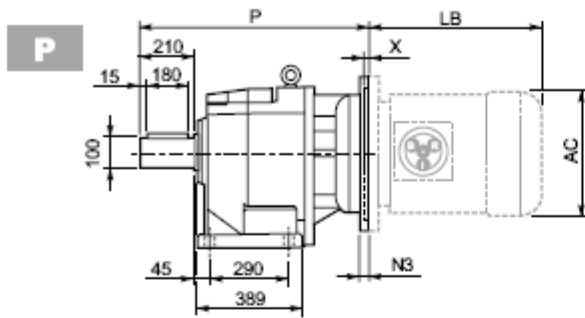
		A	B	E	F	F1	F2	F3	F4	V		
	HS	C 90 2	930.5	620.5	140	60	64	18	10	120	M16x36	273
		C 90 3	930.5	620.5	140	60	64	18	10	120	M16x36	273
		C 90 4	797	577	50	24	27	8	2.5	45	M8x19	240



C 100													
  	AC	H	HF	L	AD		M...FD M...FA		M...FD		M...FA		
							LF		R	AD	R	AD	
C 100 2/3 S4 M4S	258	474	469	1049	193	377	1158	391	226	193	217	193	
C 100 2/3 S4 M4L	258	474	469	1087	193	392	1196	410	226	193	217	193	
C 100 2/3 S4 M4LC	258	474	469	1122	193	400	1221	418	226	193	217	193	
C 100 2/3 S5 M5S	310	500	495	1173.5	245	420	1313.5	450	266	245	247	234	
C 100 2/3 S5 M5L	310	500	495	1217.5	245	436	1357.5	466	266	245	247	234	
C 100 4 S2 M2S	156	423	418	980.5	119	354	1056.5	357	129	143	134	119	
C 100 4 S3 M3S	195	442.5	437.5	1029.5	142	358	1125.5	366	160	155	160	142	
C 100 4 S3 M3L	195	442.5	437.5	1061.5	142	366	1152.5	373	160	155	160	142	
C 100 4 S4 M4S	258	474	469	1131.5	193	385	1240.5	399	226	193	217	193	
C 100 4 S4 M4L	258	474	469	1169.5	193	400	1278.5	418	226	193	217	193	
C 100 4 S4 M4LC	258	474	469	1204.5	245	408	1303.5	426	226	193	217	193	

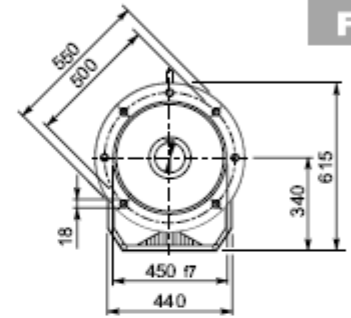
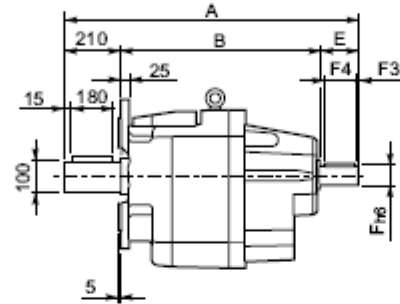
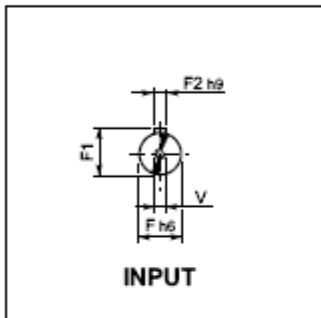
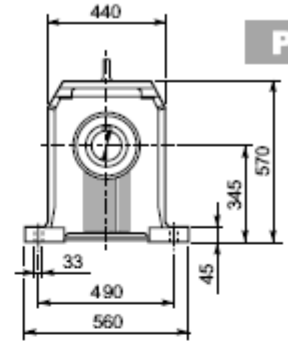
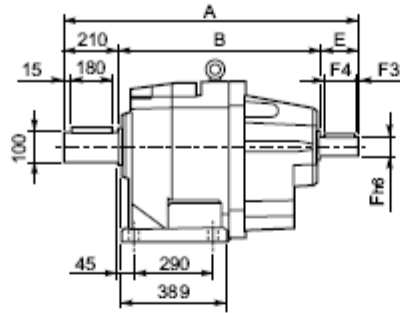
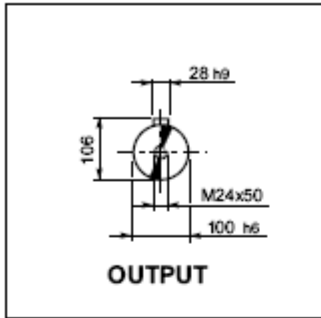


C 100...P(IEC)






C 100													BN...		BN...FD BN...FA		
		M	M1	M2	N	N1	N2	N3	N4	X	P		LB	AC	LB	AC	
C 100 2/3	P100	28	31.3	8	250	215	180	—	M12x16	4.5	749.5	364	BN 100	307	195	398	195
C 100 2/3	P112	28	31.3	8	250	215	180	—	M12x16	4.5	749.5	364	BN 112	325	219	424	219
C 100 2/3	P132	38	41.3	10	300	265	230	16	14	5	786	367	BN 132S	375	258	485	258
													BN 132M	413	258	523	258
C 100 2/3	P160	42	45.3	12	350	300	250	23	18	6	841.5	382	BN 160MR	452	258	562	258
													BN 160M/L	486	310	626	310
C 100 2/3	P180	48	51.8	14	350	300	250	23	18	6	841.5	382	BN 180M	530	310	670	310
													BN 180L	598	348	756	348
C 100 2/3	P200	55	59.3	16	400	350	300	—	M16x25	7	866.5	403	BN 200L	612	348	768	348
C 100 2/3	P225	60	64.4	18	450	400	350	30	18	7	912	403	BN 225	—	—	—	—
C 100 2/3	P250	65	69.4	18	550	500	450	30	18	7	942	426	BN 250	—	—	—	—
C 100 2/3	P280	75	79.9	20	550	500	450	30	18	6	942	426	BN 280	—	—	—	—
C 100 4	P80	19	21.8	6	200	165	130	—	M10x12	4	822.5	371	BN 80	234	156	306	156
C 100 4	P90	24	27.3	8	200	165	130	—	M10x12	4	822.5	371	BN 90	276	176	359	176
C 100 4	P100	28	31.3	8	250	215	180	—	M12x16	4.5	832.5	375	BN 100	307	195	398	195
C 100 4	P112	28	31.3	8	250	215	180	—	M12x16	4.5	832.5	375	BN 112	325	219	424	219
C 100 4	P132	38	41.3	10	300	265	230	16	14	5	869	377	BN 132S	375	258	485	258
													BN 132M	413	258	523	258
C 100 4	P160	42	45.3	12	350	300	250	23	18	5.5	919.5	381	BN 160MR	452	258	562	258
													BN 160M/L	486	310	626	310
C 100 4	P180	48	51.8	14	350	300	250	23	18	5.5	919.5	381	BN 180M	530	310	670	310
													BN 180L	598	348	756	348

C 100...HS



C 100

		A	B	E	F	F1	F2	F3	F4	V	kg
	HS	1025.5	676	140	60	64	18	10	120	M16x36	409
		1025.5	676	140	60	64	18	10	120	M16x36	409
		892	632	50	24	27	8	2.5	45	M8x19	372